

TIMBERSLED® UNIVERSAL THERMOSTAT KIT



P/N 2884180

APPLICATION

The Timbersled Universal Thermostat Kit is designed to fit a variety of makes and models of motorcycles that are not equipped with an OEM thermostat.

The Timbersled Universal Thermostat Kit is intended for use in WINTER TEMPERATURES ONLY. It is recommended to remove the thermostat from the housing during the summer months. See *Service Instructions* section for proper removal and replacement procedures.

NOTE

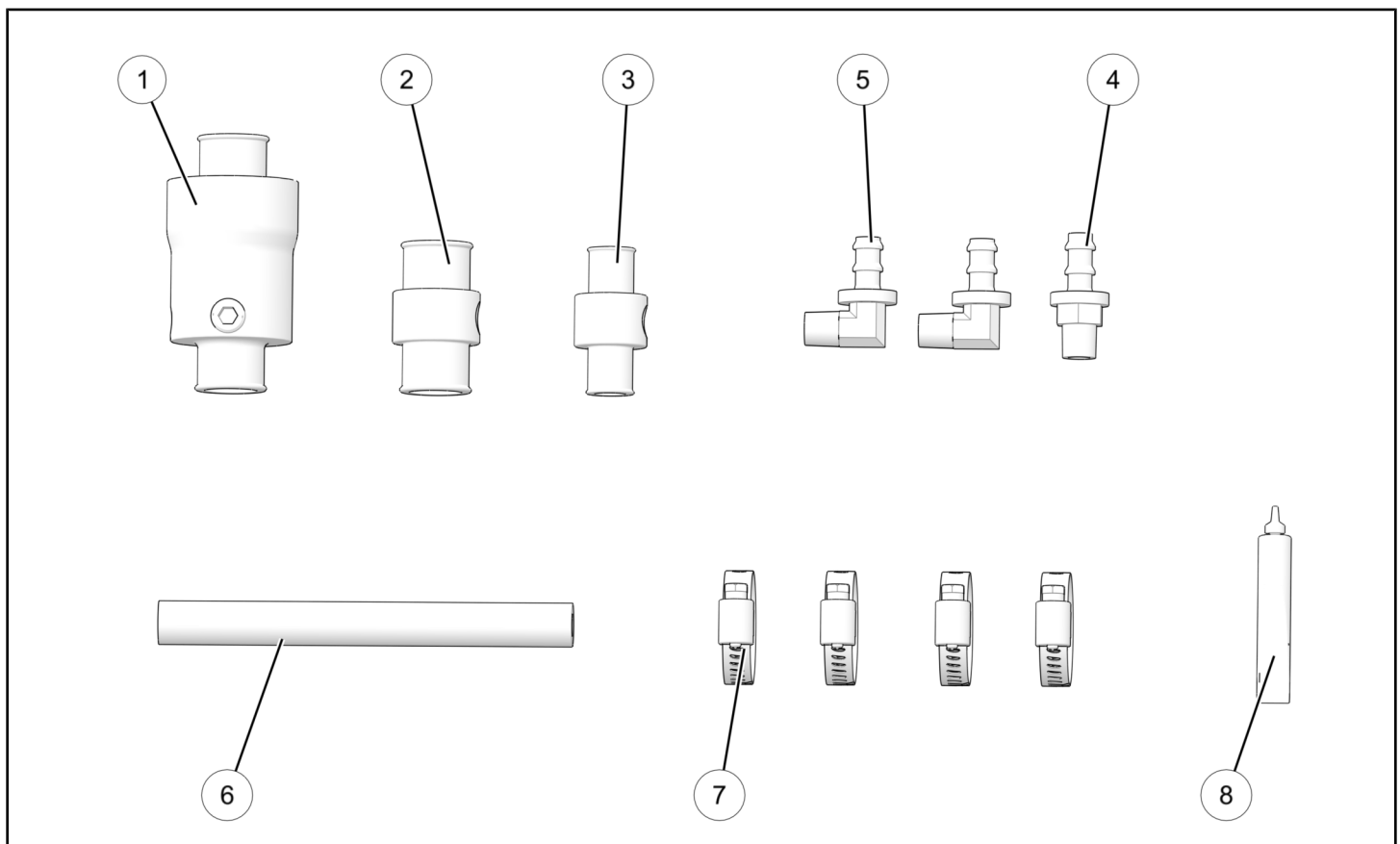
This kit is NOT compatible with Kawasaki models.

BEFORE YOU BEGIN

Read these instructions and check to be sure all parts and tools are accounted for. Please retain these installation instructions for future reference and parts ordering information.

KIT CONTENTS

This Kit includes:



REF	QTY	PART DESCRIPTION	PART NUMBER
1	1	Thermostat Assembly [Includes: 1.1-1.2 not shown]	1206099
1.1	1	Thermostat - 180°F (82°C)	7052737
1.2	1	O-Ring	5417071

REF	QTY	PART DESCRIPTION	PART NUMBER
2	1	Bypass Coupler, Return 3/4"	-
3	1	Bypass Coupler, Return 5/8"	-
4	1	Fitting, Push Fit - 1/8" NPT X 1/4", Straight	-
5	2	Fitting, Push Fit - 1/8" NPT X 1/4", 90 degree	-
6	1	Hose, Push Fit - 1/4"	-
7	4	Hose Clamp	-
8	1	Lubricant - Silicon Packet	-
	1	Instructions	9929674

TOOLS REQUIRED

- Safety Glasses
- Drain Pan
- Pliers, Slip Joint
- Screwdriver, Standard
- Socket Set, Hex Bit, Metric
- Socket Set, Metric
- Tie-Down Straps (or equivalent)
- Torque Wrench
- Wrench Set, Metric
- Vehicle Lift/Support Equipment

CONSUMABLES REQUIRED

- Antifreeze, POLARIS 50/50 Premix (or equivalent), 2-4 quarts
- Tape, Thread Sealing (or equivalent)

IMPORTANT

Your Timbersled® Universal Thermostat Kit is exclusively designed for your vehicle. Please read the installation instructions thoroughly before beginning. Installation is easier if the vehicle is clean and free of debris. For your safety, and to ensure a satisfactory installation, perform all installation steps correctly in the sequence shown.

ASSEMBLY TIME

Approximately 30 minutes

NOTE

Time may vary depending on make and model of vehicle, optional steps, other accessories installed and personal skill level and experience.

INSTALLATION INSTRUCTIONS

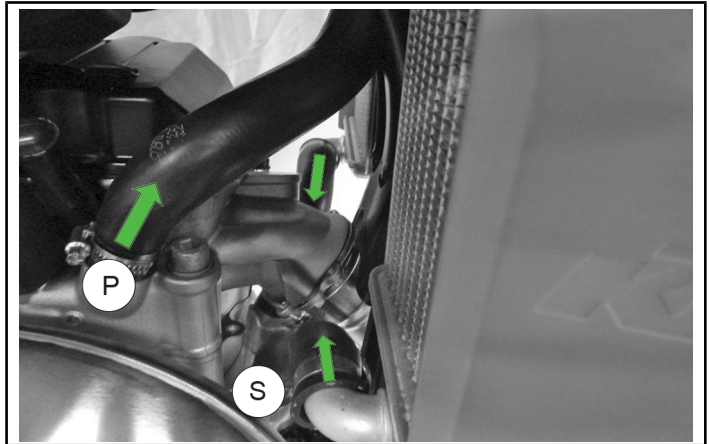
CAUTION

BEFORE STARTING INSTALLATION, always ensure vehicle is on a flat stable surface and is properly secured to avoid accidental tipping or other movement to prevent personal injury and/or damage to equipment.

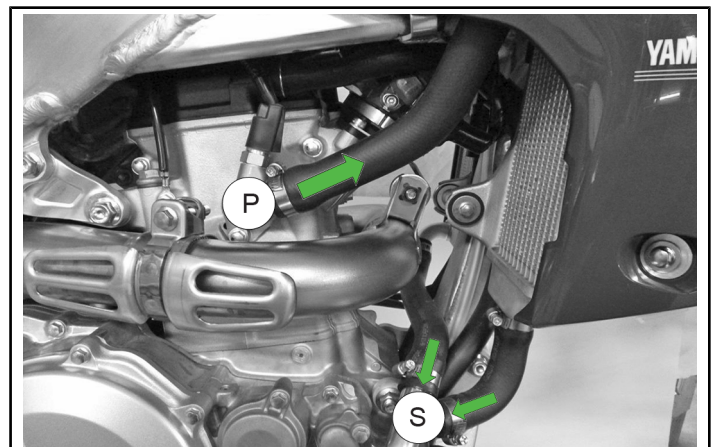
If applicable, turn key to "OFF" position and remove from vehicle.

Always allow adequate time for engine and exhaust to cool **BEFORE** starting installation to avoid potential burn injuries.

KTM shown below.



Yamaha shown below.



1. DETERMINE NECESSARY COMPONENTS.

- a. The Timbersled Universal Thermostat Kit is designed to fit a variety of makes and models of motorcycles and therefore comes with a variety of couplers and fittings. It is recommended to do a mock fit up of all parts **BEFORE** starting install to determine what components will best suit your specific application.

2. DRAIN COOLANT.

- a. Place an appropriate size container below the coolant drain plug/bolt location.
- b. As previously noted, ensure engine has had adequate time to cool, then drain coolant.

3. INSTALL THERMOSTAT.

- a. First, identify suction (S) and pressure (P) lines. See following images for examples. Arrows indicate direction of coolant flow.

- b. Place the thermostat next to the pressure line to determine where it would fit best.

NOTE

Keep in mind the bypass line will need to be routed to avoid contacting exhaust and provide the best possible routing to the suction line.

For this instruction we will refer to the hoses coming off the bottom of the radiators that connect the radiator and water pump as the suction lines (S). The hose coming from the top of the engine and returning the coolant to the upper portion of the radiator will be referred to as the pressure line (P).

- c. Mark the pressure line by using the thermostat as a guide for marking as shown.



- d. Remove pressure line and cut on your marks.

- e. Install the supplied push lock fitting that works best for your specific vehicle application onto thermostat and orient it to allow proper routing of bypass line.

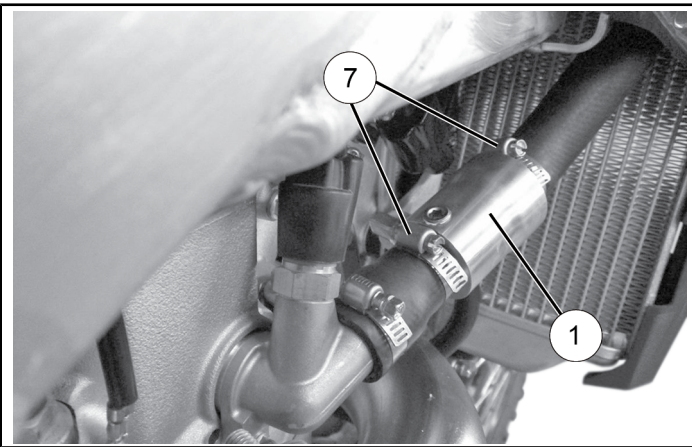
IMPORTANT

Apply thread sealing tape (or equivalent) to threads of push lock fitting before installing.

- f. Install thermostat ① with the larger diameter towards the front of the bike (direction of flow) using the supplied hose clamps ⑦ keeping in mind where the bypass line will route. Torque clamps to specification.

TORQUE

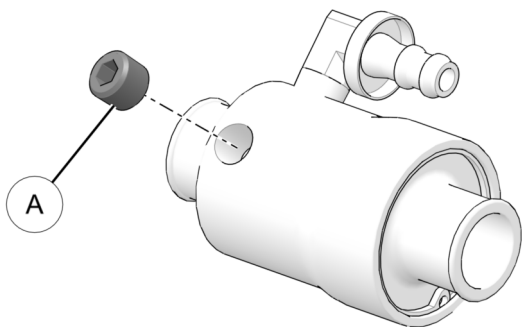
8 in. lbs (0.9 Nm)



- g. Reinstall pressure line onto vehicle being sure to secure with previously removed hardware.

NOTE

The thermostat housing has an extra port (A) with 1/8" NPTF threads to allow for the addition of additional aftermarket accessories such as a temp sensor, carb heater, or other 1/8" NPTF thread compatible accessories.



4. INSTALL BYPASS COUPLER.

- a. Find the suction line that has the best routing for bypass hose.

NOTE

Keep in mind the bypass line will need to be routed to avoid contacting exhaust and provide the best possible routing to the suction line.

- b. Select the appropriate bypass coupler ②/③ size for your specific vehicle application and routing preference.
- c. Mark the suction line for bypass coupler, remove and cut hose.
- d. Install appropriate push lock fitting ④/⑤ for your specific vehicle application and routing preference onto bypass coupler and orient it to allow proper routing of bypass line.

IMPORTANT

Apply thread sealing tape (or equivalent) to threads of push lock fitting before installing.

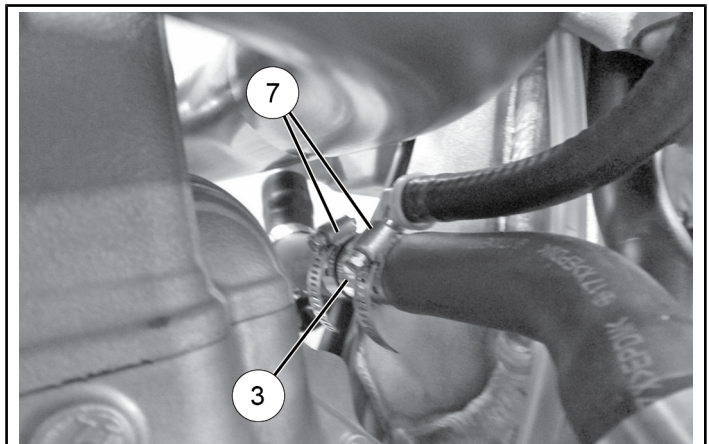
- e. Install proper bypass coupler ②/③ into suction hose using the supplied hose clamps ⑦. Torque to specification.

NOTE

Bypass coupler is non-directional and can be oriented either way.

TORQUE

8 in. lbs (0.9 Nm)



- f. Reinstall hose back onto vehicle being sure to secure hose with previously removed hardware.

5. INSTALL BYPASS HOSE.

- a. Route supplied bypass line ⑥ from the push lock fitting on the bypass coupler away from the exhaust in the shortest path possible to the push lock fitting on the thermostat and cut to length.

NOTE

You may have to reorient the push lock fittings and/or bypass coupler/thermostat housing to obtain proper routing/fitment.

- b.

TIP

Before installing hose, apply a small amount of the supplied silicon lubricant to the outer diameter of both push lock fittings as this will aid in the installation of the hose.

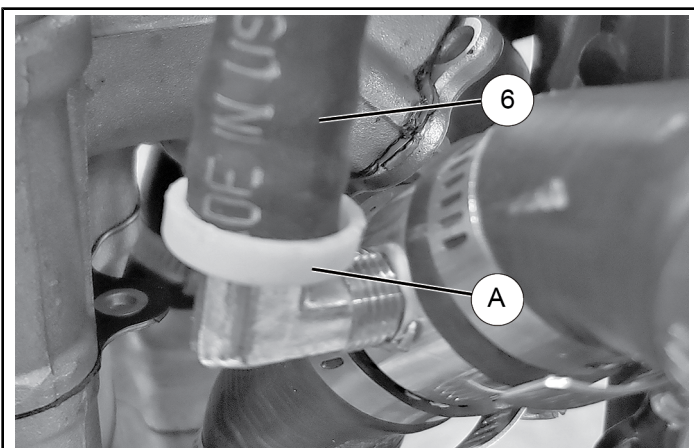
Using a twisting motion while installing hose will also make it easier to push the hose all the way on.

Install supplied bypass hose ⑥ onto the previously installed push lock fittings on thermostat and bypass coupler making sure there is adequate clearance between the bypass line and the exhaust system.

Ensure that the bypass hose ⑥ is fully seated onto the barbed end of the push lock fitting and is sitting firmly against the yellow plastic hose stop ring ① as seen below.

NOTE

The supplied push lock fittings are to be used only with hose intended for push-on style fittings.



CAUTION

Ensure the bypass line maintains an adequate distance between all heat sources and other surfaces to avoid potential damage to hose which could result in engine failure and/or personal injury.



6. REFILL COOLANT SYSTEM.

- a. Make sure all hoses are secured and drain plug/bolt has been reinstalled and properly torqued per your specific vehicles service manual.
- b. Using a quality antifreeze such as Polaris 50/50 premix antifreeze, refill the coolant system and secure radiator cap back into position.

IMPORTANT

After filling, run vehicle for a brief period and re-check antifreeze level. Fill as needed.

7. VERIFY WORK.

- a. Check to make sure all tools are accounted for and all necessary steps have been completed.

SERVICE INSTRUCTIONS

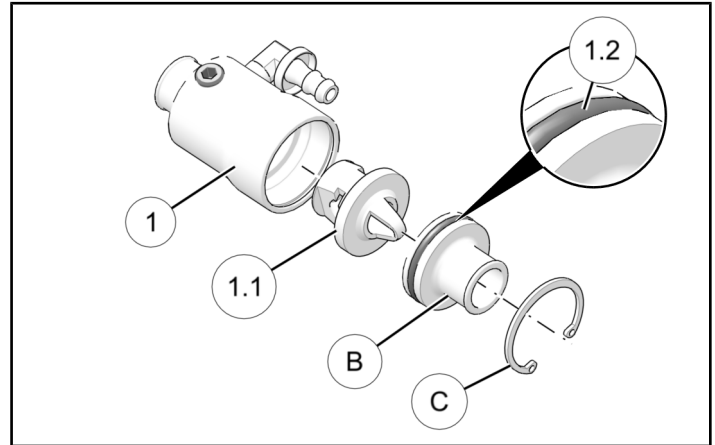
The Timbersled Universal Thermostat Kit is intended for use in WINTER TEMPERATURES ONLY. It is recommended to remove the thermostat from the housing during the summer months and reinstall the thermostat for winter operation. Follow the procedures below for proper removal and installation of your Timbersled Universal Thermostat.

1. REMOVE/INSTALL THERMOSTAT.

CAUTION

BEFORE performing the following procedure, always ensure vehicle is on a flat stable surface and is properly secured to avoid accidental tipping or other movement to prevent personal injury and/or damage to equipment.
If applicable, turn key to "OFF" position and remove from vehicle.
Always allow adequate time for engine and exhaust to cool **BEFORE** starting installation to avoid potential burn injuries.

- a. Place an appropriate size container below the coolant drain plug/bolt location and drain coolant to a level below the thermostat housing.
- b. If necessary, loosen the hose clamp on the outlet side of the thermostat housing and remove the pressure hose to gain access to the snap ring.
- c. Using a snap ring pliers, remove snap ring © from front portion of thermostat housing.
- d. Next, remove the outlet side of the thermostat housing ⑥. Inspect o-ring (1.2) for any damage and replace as necessary.
- e. Depending on your intended use, remove or install thermostat (1.1).
 - i. If operating motorcycle during the summer months it is recommended to remove the thermostat.
 - ii. For winter operation install thermostat.



- f. Reinstall outlet side of thermostat housing ⑥ and secure into position with previously removed snap ring ©. Ensure snap ring is fully seated into the snap ring groove on the thermostat housing.
- g. If you previously removed the pressure hose, reinstall it onto the thermostat housing and secure with previously removed hose clamp. Torque to specification provided.

TORQUE

8 in. lbs (0.9 Nm)

2. REFILL COOLANT SYSTEM.

- a. Make sure all hoses are secured and drain plug/bolt has been reinstalled and properly torqued per your specific vehicles service manual.
- b. Using a quality antifreeze such as Polaris 50/50 premix antifreeze, refill the coolant system and secure radiator cap back into position.

IMPORTANT

After filling, run vehicle for a brief period and re-check antifreeze level. Fill as needed.

3. VERIFY WORK.

- a. Check to make sure all tools are accounted for and all necessary steps have been completed.

FEEDBACK FORM

A feedback form has been created for the installer to provide any comments, questions or concerns about the installation instructions. The form is viewable on mobile devices by scanning the QR code or by clicking [HERE](#) if viewing on a PC.

