

# TIMBERSLED® HEATED HANDLEBAR KIT



P/N 2884328

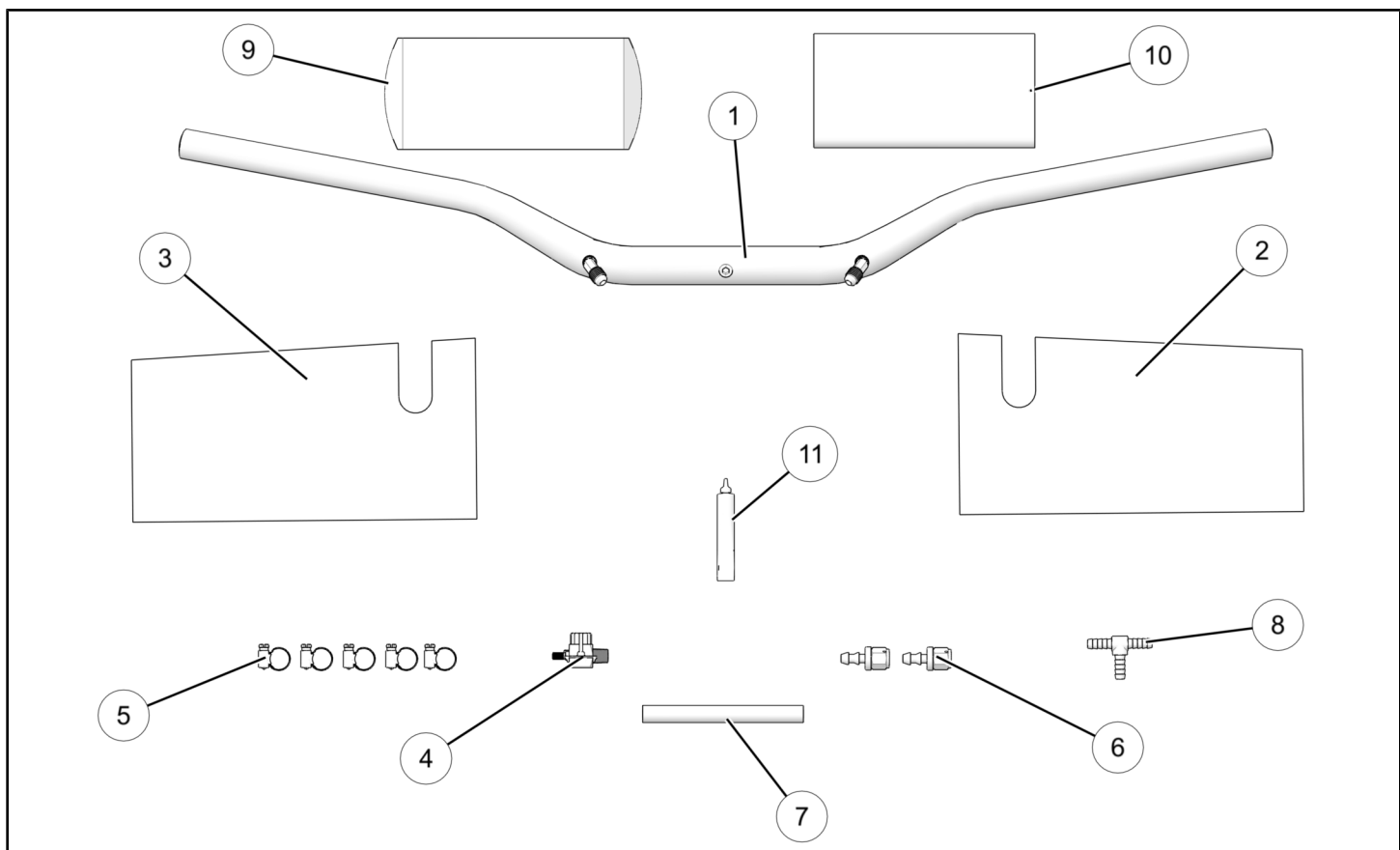
## BEFORE YOU BEGIN

Read these instructions and check to be sure all parts and tools are accounted for. Please retain these installation instructions for future reference and parts ordering information.

## KIT CONTENTS

### NOTE

This kit contains parts for the installation of the Timbersled Heated Handlebar Kit only. Prior installation of the Timbersled Universal Thermostat Kit, PN 2884180, is also required (sold separately).



REF	QTY	PART DESCRIPTION	PART NUMBER
1	1	ASM- Heated Handlebar	1024942
2	1	Cover - Handle Bar Heated, Left Hand	2689676
3	1	Cover - Handle Bar Heated, Right Hand	2689677
4	1	Valve - 1/8 NPT x 1/4 Hose	7052741
5	5	Clamp - Hose #4 Worm Drive	7052742
6	2	Fitting - 4AN x 1/4 Hose Swivel	7052752
7	1	Hose - Rubber 1/4in Push Fit, 183cm	8450222

REF	QTY	PART DESCRIPTION	PART NUMBER
8	1	Fitting - T, 1/4in Push Fit, Barbed	7052760
9	1	Pad - Handlebar Clamp	2689864
10	1	Cover - Handlebar Clamp	2689865
11	1	Lubricant - Silicone Packet	8560269
	1	Instructions	9929947

## TOOLS REQUIRED

- Safety Glasses
- Screwdriver, Slotted
- Wrench Set, SAE
- Container, 5 Qt. (or equivalent)
- Utility Knife (or equivalent)
- Marker

## CONSUMABLES REQUIRED

- Antifreeze, POLARIS 50/50 Premix, 2-4 quarts
- Tape, Thread Sealing

## IMPORTANT

Your Timbersled® Heated Handlebar Kit is exclusively designed for your vehicle. Please read the installation instructions thoroughly before beginning. Installation is easier if the vehicle is clean and free of debris. For your safety, and to ensure a satisfactory installation, perform all installation steps correctly in the sequence shown.

## ASSEMBLY TIME

Approximately 60 minutes

### NOTE

Additional time may be required for optional steps, or to accommodate other installed accessories.

## INSTALLATION INSTRUCTIONS

### CAUTION

**BEFORE STARTING INSTALLATION**, always ensure vehicle is on a flat stable surface and is properly secured to avoid accidental tipping or other movement to prevent personal injury and/or damage to equipment. If applicable, turn key to "OFF" position and remove from vehicle.

### IMPORTANT

Installation of the Timbersled Universal Thermostat kit PN 2884180 is required prior to installing the Timbersled Heated Handlebar Kit. Read through BOTH sets of instructions prior to installation. If the Timbersled Universal Thermostat kit is already installed, proceed with Heated Handlebar installation.

### TIP

Your Timbersled Heated Handlebar Kit has been supplied with silicone lubricant to aid in the installation of the supplied hose onto the push lock style fittings. Before installing hose onto a push lock fitting, apply a small amount of the supplied silicone lubricant to the outer diameter of the push lock fitting as this will aid in the installation of the hose. Using a twisting motion while installing hose will also make it easier to push the hose all the way on.

## 1. DRAIN COOLANT.

### WARNING

**NEVER** open a hot radiator.  
Make sure you allow adequate time for engine and coolant to cool BEFORE draining antifreeze to avoid potential burn injuries.  
Failure to comply could result in serious injury or death.

- a. Reference your bike's service manual for proper procedures and specifications.

## 2. REMOVE HANDLEBAR CONTROLS.

- a. Reference your bike's service manual for proper removal procedures and specifications.
- b. Remove brake, throttle, clutch and any other assemblies attached to the handlebars. Retain all mounting hardware.

## 3. REMOVE HANDLEBARS.

- a. Reference your bike's service manual for proper removal procedures and specifications.
- b. Remove stock handlebars. Retain all mounting hardware.

## 4. INSTALL TIMBERSLED HEATED HANDLEBARS.

- a. Reverse the steps from the handlebar removal and install the provided Timbersled heated handlebars.



- b. Reference your bike's service manual for proper procedures and specifications.

## 5. REINSTALL HANDLEBAR CONTROLS.

- a. Reinstall all previously removed handlebar controls.
- b. Reference your bike's service manual for proper procedures and specifications.

## 6. INSTALL CONTROL VALVE AND TEE FITTING.

### TIP

It is best to mock-up the thermostat and bypass return housing first, if you do not already have them installed, with the temperature control valve loosely installed. This will help you get everything oriented and routed correctly before you permanently mount everything.

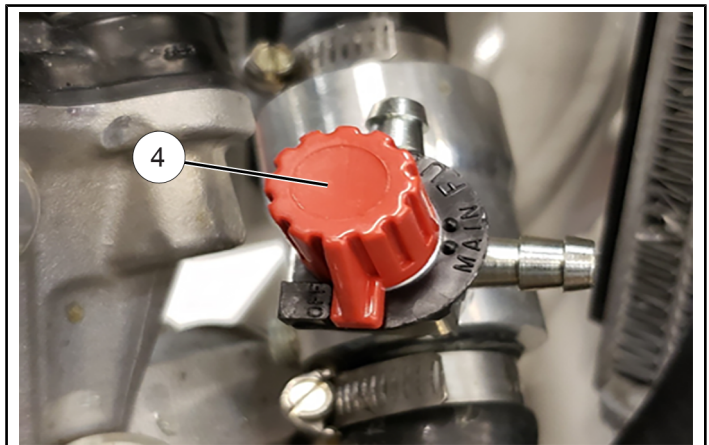
Reference the Timbersled Universal Thermostat Kit instructions for above procedures.

### a. INSTALL CONTROL VALVE.

- i. The control valve ④ will need to be installed into the port on the thermostat housing that allows for best hose routing. Once you've determined which port will work best, place thread sealant tape on the threads of the control valve and install control valve into thermostat housing.

### NOTE

If the Timbersled Universal Thermostat kit was previously installed you will need to remove the 90 degree elbow fitting previously installed to allow for control valve installation. Ensure the remaining port on the thermostat housing is plugged as referenced in the thermostat instructions.

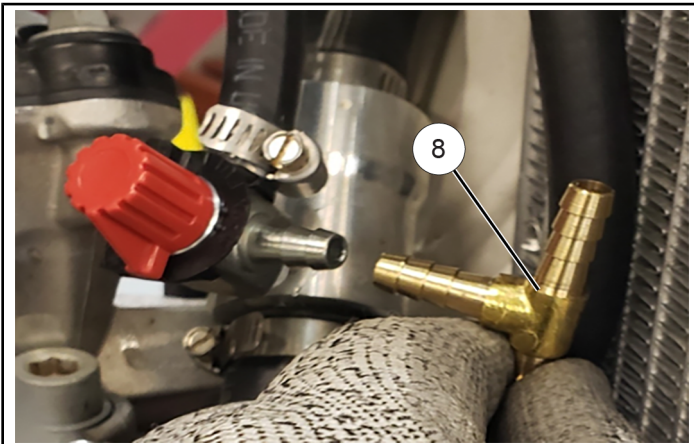


b. INSTALL BARBED TEE FITTING.

- i. Orient the barbed fitting ⑧ into the hose coming from the bypass/return housing as shown and find the location that allows for best hose routing.

**NOTE**

If the Timbersled Universal Thermostat Kit was previously installed you may have to reorient the 90 degree elbow fitting on the bypass/return housing to achieve proper hose routing for the barbed tee fitting and the handlebar hose.



- ii. Once located, mark the hose ⑦ as shown. Then cut the bypass hose and install the barbed tee fitting. This junction requires a hose clamp ⑤ so be sure to place a provided hose clamp onto the bypass hose BEFORE pushing hose onto fitting.



7. ROUTE HOSES.

**NOTE**

Your kit is supplied with 6 feet of push lock hose which is enough for both handlebar hoses and the return hose.

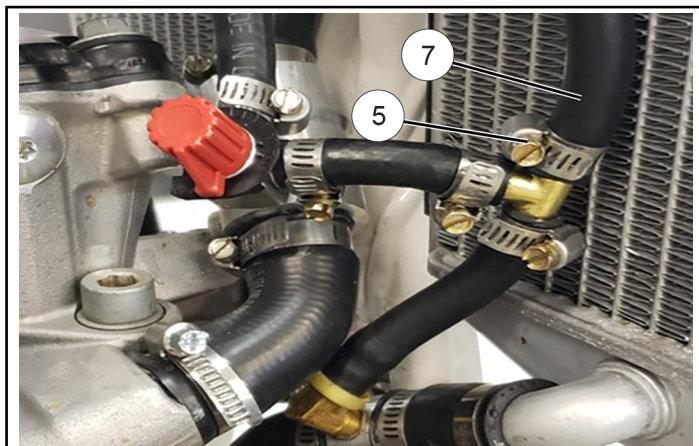
**IMPORTANT**

DO NOT cut handlebar hose until you have completely routed the hose to its destination and have verified there is enough slack in the hose to allow the handlebars to be turned side to side without pinching the hose.

- a. Attach one end of the supplied hose ⑦ to upper leg of the barbed tee fitting being sure to install provided hose clamp ⑤ as shown then route hose to left side handlebar fitting. Ensure handlebars can be turned side to side without causing any interference to the hose. When finished, be sure to tighten hose clamp to specification.

**TORQUE**

8 in. lbs (0.9 Nm)



- b. Once you have verified hose length and that there is no interference with the steering components, cut the hose to length and install the provided flared push lock fitting ⑥ on the open end of hose as shown. A hose clamp is not required on this fitting.





- c. After installing fitting, connect hose to mating fitting on left hand side of handlebar. This threaded connection DOES NOT require thread sealer.



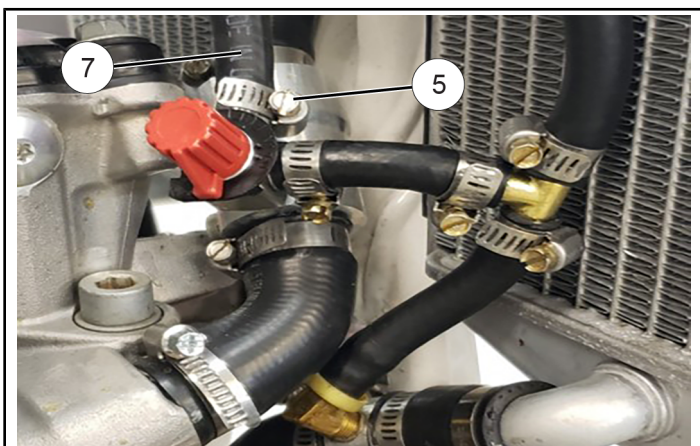
- d. Next, attach the remaining hose to the upper leg of the control valve, being sure to install provided hose clamp, and route to the right hand handle bar fitting. Ensure handlebars can be turned side to side without causing any interference to the hose. When finished, be sure to tighten hose clamp to specification.

#### IMPORTANT

DO NOT cut handlebar hose until you have completely routed the hose to it's destination and have verified there is enough slack in the hose to allow the handlebars to be turned side to side without pinching the hose.

#### TORQUE

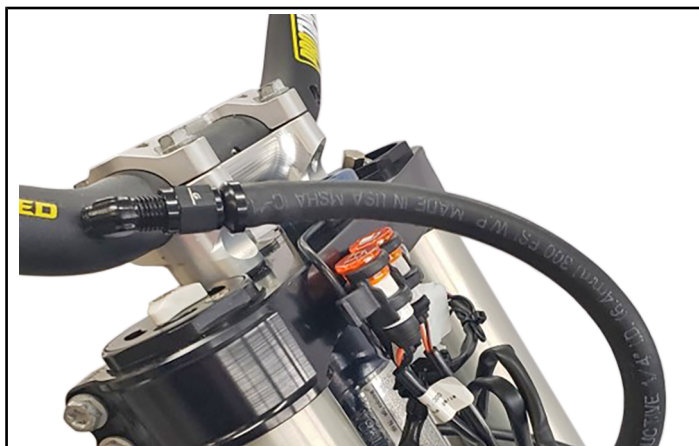
8 in. lbs (0.9 Nm)



- e. Once you have verified hose length and that there is no interference with the steering components, cut the hose to length and install the provided flared push lock fitting on the open end of hose as shown. A hose clamp is not required on this fitting.



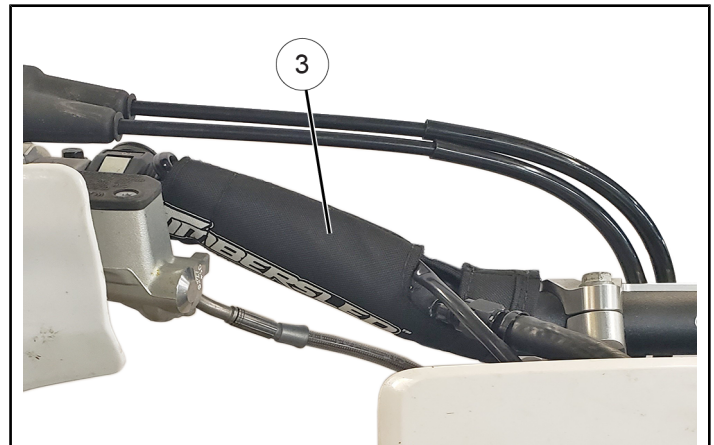
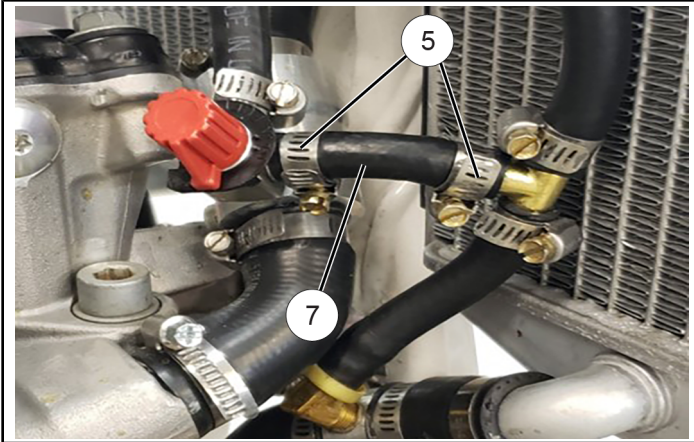
- f. After installing fitting, connect hose to mating fitting on right hand side of handlebar. This threaded connection DOES NOT require thread sealer.



- g. Next, route the final hose from the control valve to the barbed tee fitting as shown being sure to install a hose clamp on each end of the hose. When finished, tighten hose clamps to specification.

- b. Install both left hand ② and right hand ③ handle bar covers as shown.

**TORQUE**  
8 in. lbs (0.9 Nm)



**8. INSPECT HOSE CONNECTIONS AND ROUTING.**

- a. Double check ALL hose connections to be sure they are properly secured and ALL hoses do not interfere with steering or any other components.

**9. INSTALL HANDLEBAR COVERS/PADS.**

- a. Install handlebar clamp pad ⑨ and cover ⑩ in place of the original pad and cover over the handlebar clamps.

**10. REFILL COOLANT.**

**NOTE**  
Reference your bike's service manual for proper procedures and specifications for the following steps.

- a. Refill coolant to proper level.
- b. Move vehicle to a well vented area and briefly run engine to check that there are no leaks. If no leaks are present, turn the control valve to the "ON" position and check to ensure the handlebars are warming up as your bike warms up.
- c. After verifying cooling system is working properly, shut engine off and recheck your coolant level. Fill as required.

**11. VERIFY WORK.**

- a. Check to make sure all tools are accounted for and all necessary steps have been completed.

## FEEDBACK FORM

A feedback form has been created for the installer to provide any comments, questions or concerns about the installation instructions. The form is viewable on mobile devices by scanning the QR code or by clicking [HERE](#) if viewing on a PC.

