

PRO ARMOR
EVERY RIDE HAS A STORY

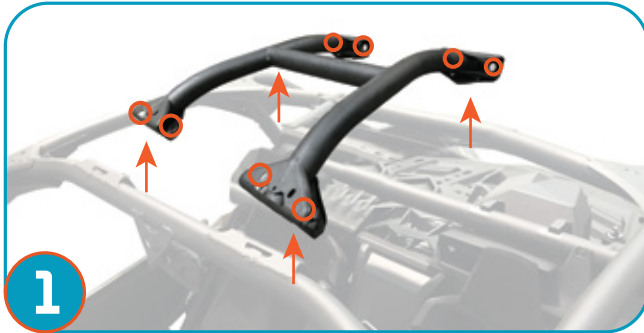


WARNING

- Never stick hands, head or arms outside of vehicle at any time when it is in motion.
- Always wear and use proper safety equipment when using any Pro Armor product.
- Improper use of directions and/or product can result in injury to yourself or damage to your vehicle.
- **Disclaimer please read:** This product is sold without warranty expressed or implied. No warranty or representation is made as to the products ability to protect the user / occupant from any injury or death in any manner of use. The user assumes that risk. The effectiveness of this equipment is directly related to the manner in which it is installed, used, and / or maintained.
- **Proper installation is solely the responsibility of the installer, and will not be assumed by Pro Armor.**
- If you have questions about your installation or are unable to complete installation, contact Pro Armor Customer Service (888)312-7667 or have an authorized dealer or trained technician, inspect your installation.

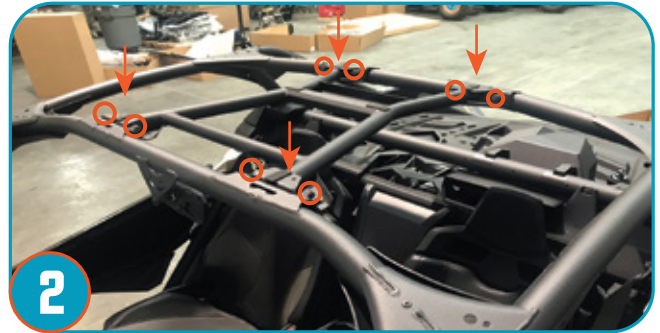
TOOLS REQUIRED:
18MM SOCKET
4MM ALLEN
10MM WRENCH

X3 Stock Roof Install Instructions (CA162R126)



1

Using a 18mm socket, remove the 8 bolts to remove the stock cross brace.



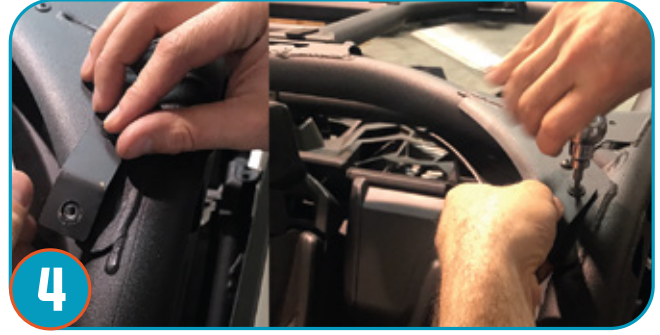
2

Using an 18mm socket, replace the 8 bolts with provided, Pro Armor cross brace.



3

Drill out front and rear driver-side and passenger tabs to allow ease of bolt passthrough.



4

Apply provided bolt tabs to the driver and passenger sides, toward the front of the vehicle, using the provided 2 bolts.



5

Remove roof from its packaging and place on top of vehicle, lining up the bolt holes between the roof and cage..



6

Hand tighten all (8) bolts to allow for adjustment, as needed. Front two bolts will secure bolt tabs (from step 3) and roof to cage.



7

Insert rubber spacers on both driver-side and passenger-side, at rear of roof and tighten bolts securing roof in place.



8

Tighten all bolts (10) to secure roof to cage/vehicle.