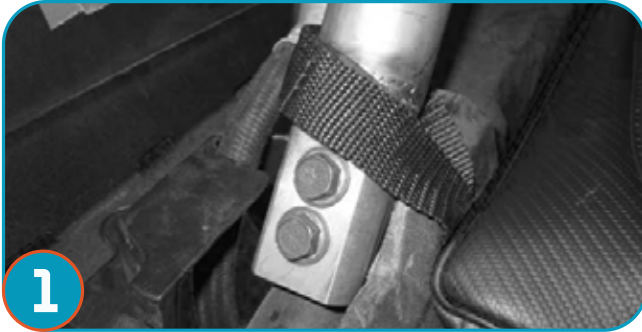




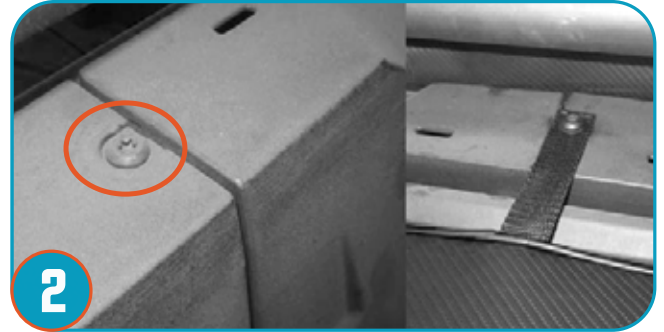
## XP 1000 Bed Storage Bag Instructions (P141Y328)

**\*\*\*NOTE: Prior to installation, please verify if a revised version of this instruction sheet is available on proarmor.com.\*\*\***

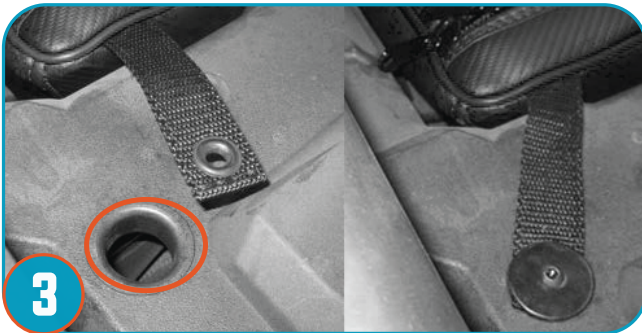
Hardware Kit: 2- Nut, M6 x 1.0, Nyloc Flanged Hex, Zinc  
4- 1/4" Fender Washer, 1-1/4" OD, Black Zinc  
2- Bolt, M6 x 1.00 x 40mm Button Head Socket Black Zinc



**1** Make sure the bed is free of anything and clean. Install the bag as shown in figure to the bottom left. The Velcro corner straps should be facing the back of the vehicle and able to wrap around the roll cage connection area. Repeat for opposite side.



**2** Remove the stock bed bolt located under the harness bar in the middle and holding the bed together. Install the bolt back through the bed storage strap with the steel hollow rivet and then into the bed, and just leave hand tight.



**3** Use provided M6 bolt and insert it through the hollow rivets on the corner straps then into item fender washer and through the existing hole in the bed. On the bottom side put on fenderwasher and nyloc nut and tighten these securely. Repeat for opposite side.



**4** Check each strap and make sure they are fastened straight and look visually secure. Be sure to check hardware each use. There are 2 storage adjustment walls in the inside of the bag. You can put them where you desire so your storage is custom for you. Install is now complete.



### ⚠️ WARNING

**⚠️ WARNING**

**Improper Use of Off-Highway Vehicles Can Cause Severe Injury or Death**

**Be Prepared**

- Fasten seat belts.
- Wear an approved helmet and protective gear.
- Place word for message about other occupant restraint devices.
- Each rider must be able to sit with back against seat, feet flat on floor (and foot rests), and hands on steering wheel or handlebars (where equipped). Stay completely inside the vehicle.

**Be Sure Riders Pay Attention and Plan Ahead**

If you think or feel the vehicle may tip or roll, reduce your risk to injury:

- Keep all feet on the steering wheel or handlebars and brace yourself.
- Do not put any parts of your body outside of the vehicle for any reason.

This product is sold without warranty expressed or implied. No warranty or representation is made as to the products ability to protect the user / occupant from any injury or death in any manner of use. The user assumes that risk. The effectiveness of this equipment is directly related to the manner in which it is installed, used, and / or maintained. Proper installation is solely the responsibility of the installer, and will not be assumed by Pro Armor.