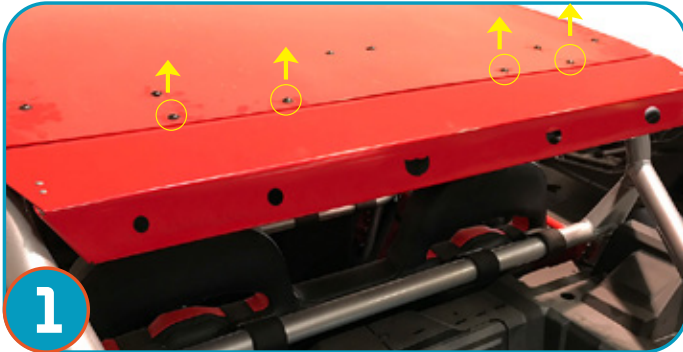




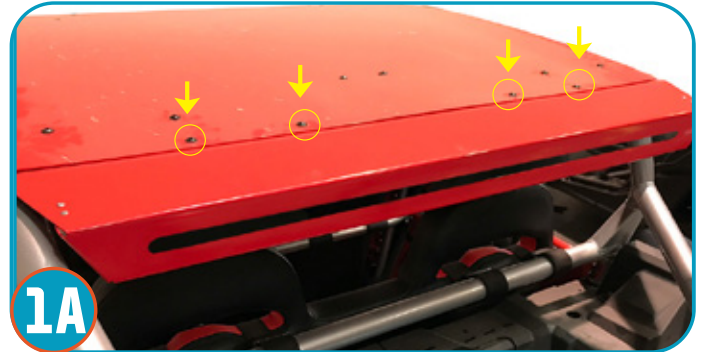
## Asylum Rear Wing w/ Light Bar (P141R125/P144R125)

\*\*\*NOTE: Prior to installation, please verify if a revised version of this instruction sheet is available on proarmor.com.\*\*\*



1

If replacing the rear wing of your Asylum roof with new rear lightbar remove the 4 allen bolts securing wing to roof and replace with lightbar wing replacement and re-apply the 4 allen bolts.



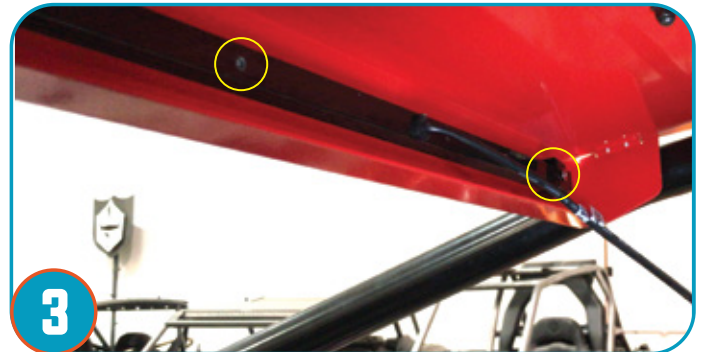
1A

If your lightbar wing was purchased with the roof, install rear wing to roof prior to placing roof onto vehicle. Securing it with the four (4) provided allen bolts. Then place roof with wing onto vehicle.



2

Insert lightbar into rear-wing, running the wire through the back opening of rear wing.



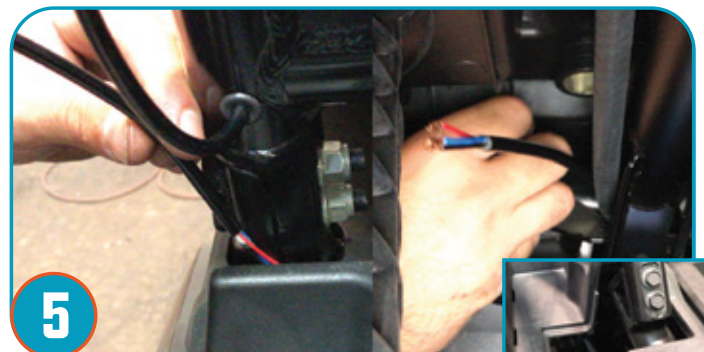
3

Secure the light-bar to the rear wing using the provided brackets and screws (3 brackets) Using an allen wrench tighten the brackets.



4

For a clean install, we have drilled holes into the rear cage pillar (Just below weld joint on inside of tube & lower back-side of rear pillar, avoiding welds) and run wires down through tubing. Grommits not included. \*Should you prefer not to drill, your can strategically zip tie the wire.

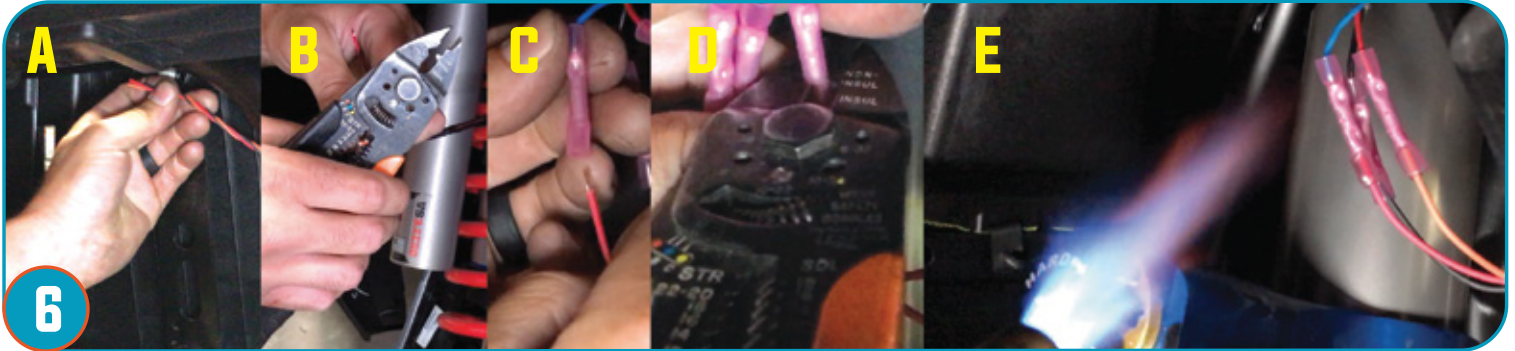


5

Guide light bar wire down cage pillar through vehicle plastics into wheel well, running along side the chassis, zip tie as needed to secure wire. Remove trunk panel (located where rear cage pillar mounts to rear bungs) for easier install.



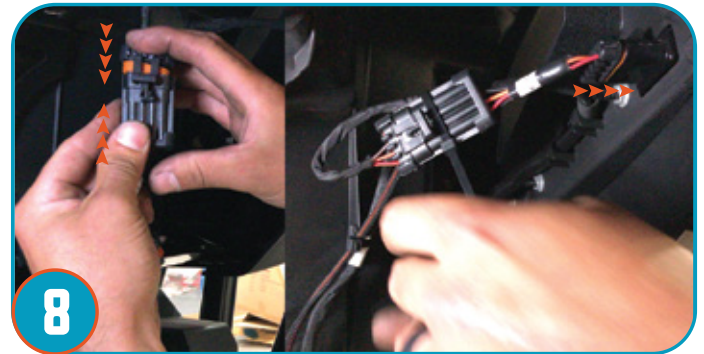
## Asylum Rear Wing w/ Light Bar (P141R125/P144R125)



Using the provided wiring harness, connect the light bar wiring to harness wiring. **A: Run harness wire to connect to light bar wire. B: Strip wires and join black to black, red to orange, blue to red wires. C: Insert both ends of light bar wire and harness wires into corresponding wire connectors. D: Crimp wires using the provided wire connectors. E: Use torch or heat gun to heat shrink. F: Wrap wire connectors with electrical tape. (not shown above).**



**7** Zip tie any loose wiring to existing electrical and/or frame of vehicle, under wheel well and replace the trunk panel removed from step 5.



**8** Connect the harness plug to the rear brake plug, then plug into rear brake light port on vehicle. Your rear amber and brake light will now operate with your rear brake lights.



### **⚠ WARNING**

- **Never** stick hands, head or arms outside of vehicle at any time when it is in motion.
  - **Always** wear and use proper safety equipment when using any Pro Armor product.
  - Improper use of directions and/or product can result in injury to yourself or damage to your vehicle.
  - **Disclaimer please read:** This product is sold without warranty expressed or implied. No warranty or representation is made as to the products ability to protect the user / occupant from any injury or death in any manner of use. The user assumes that risk. The effectiveness of this equipment is directly related to the manner in which it is installed, used, and / or maintained.
- Proper installation is solely the responsibility of the installer, and will not be assumed by Pro Armor.**
- If you have questions about your installation or are unable able to complete installation, contact Pro Armor Customer Service (888)312-7667 or have an authorized dealer or trained technician, inspect your installation.