

# PRO ARMOR



## Polaris RZR 900S Rear Trail Bumper (P159042)

### Installation Instructions



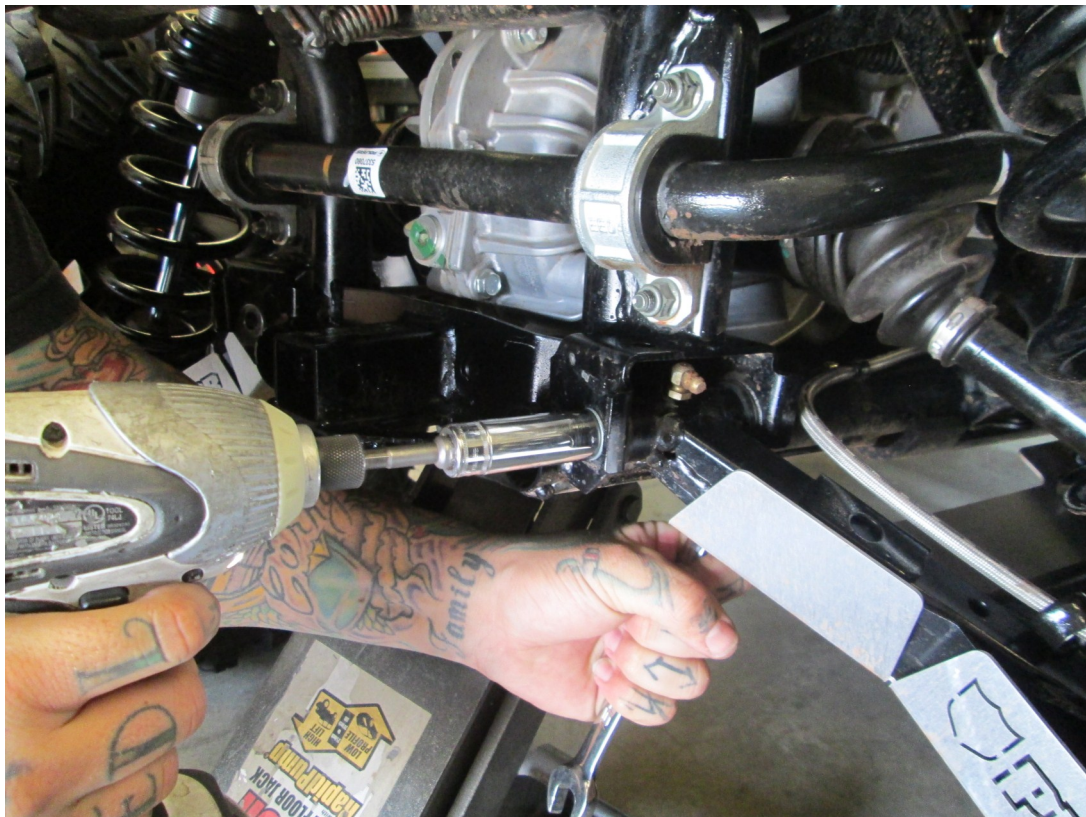
- Begin by making sure there are no obstructions that would interfere with the install of the bumper. Remove the two plastic caps that cover the upper mounting holes.



- Jack up the rear of the vehicle to relieve suspension load.



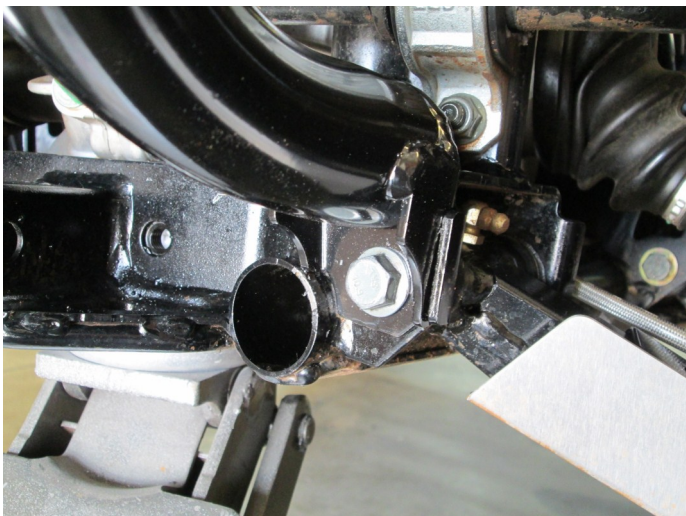
- Remove the 15mm bolt, washer, and nut used to fasten the lower a-arm to the chassis. Repeat for other side.

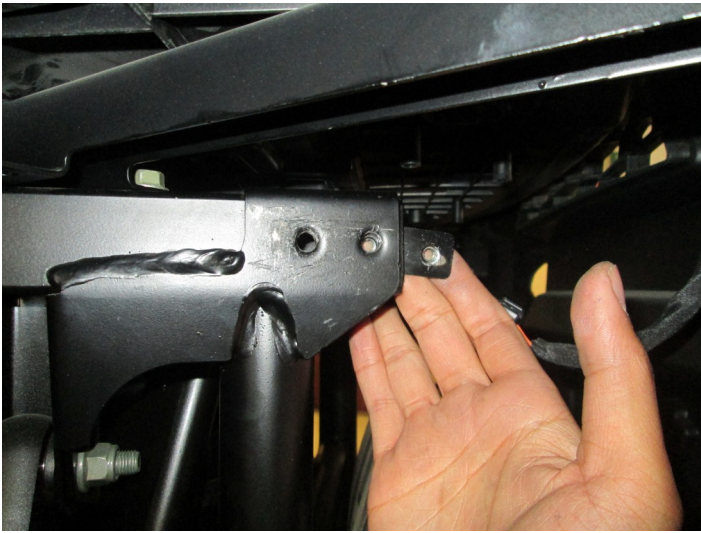


- Place the bumper onto the car and line up the lower mounting brackets to the chassis.



- Replace the 15mm bolt and nut you removed earlier, but without the washer. This will ensure that the threaded portion of the bolt will reach the nylon portion of the nut. It may be helpful to wedge a long flat head screw driver between the lower a-arm and chassis to realign the mounting holes, while you shoot the bolt through. Leave the hardware loose. Repeat for other side.





- The supplied mounting tab [Item 2] will be placed on the inside of the chassis' square tube as shown. The supplied M6 button head bolts [Item 1] will then be used to fasten the upper mounting bracket to the chassis. It may be helpful for a second person to hold the mounting tab in place, while you line up the upper mounting bracket and shoot the M6 bolts through. Leave the hardware loose. Repeat for other side.



- Once all the hardware is in place and you are satisfied with the alignment of the bumper on the car, you can fully tighten down all hardware. Make sure to torque the lower 15mm suspension bolts to factory spec. Make sure all mounting hardware is secure before and after every use of vehicle. Installation is now complete.

### Hardware Kit

ITEM NO.	Part Number	DESCRIPTION	QTY.
1	HDWB0184	BOLT, M6 X 1.00 X 16MM BUTTON HEAD BOLT, BLACK ZINC	4
2	P159041-18	PEM NUT MOUNTING TAB ASSEMBLY	2

### WARNING

**Please read:** This product is sold without warranty expressed or implied. No warranty or representation is made as to the products ability to protect the user / occupant from any injury or death in any manner of use. ***The user assumes that risk.*** The effectiveness of this equipment is directly related to the manner in which it is installed, used, and / or maintained. **Proper installation is solely the responsibility of the installer, and will not be assumed by Pro Armor.**

For further information on installation instructions and warnings please visit our website [WWW.PROARMOR.COM](http://WWW.PROARMOR.COM) or contact customer service at 1-888-31-ARMOR