



CONTENTS:
1- REAR BUMPER
2- MOUNTING BARS (2)
3- MOUNTING BRACKETS (2)

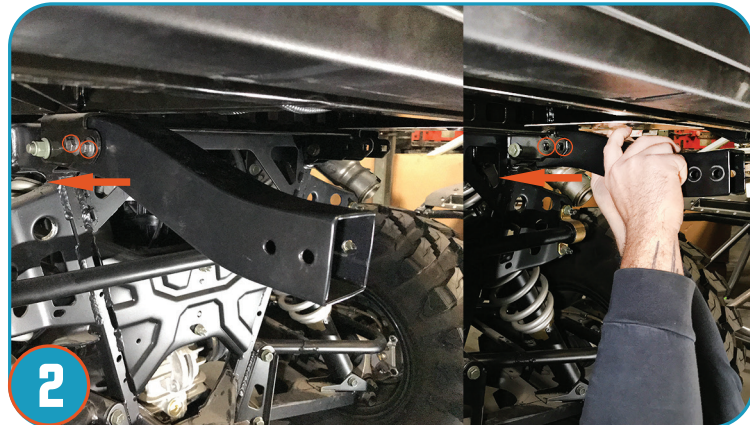
4- (4) - M8X1.25X80MM BOLTS
(4) - M8X1.25X70MM BOLTS
(8) - M8X1.25 NYLOC NUTS
(4) - 3/8 X 1" SELF TAPING SCREWS
5- 1 CABLE

Ranger Rear Bumper Instructions (P1813P369MB)

NOTE: Prior to installation, please verify if a revised version of this instruction sheet is available on proarmor.com.



Replace the stock cable located underneath bed of Ranger. (A) Remove top clip (B) Push top pin only enough to remove cable. (C) Loop new cable onto pin. Compress shock by closing the bed. (D) All in one motion raise the bed and push the pin in as this will temporarily relieve pressure on the pin. (E) Re-install clip. Repeat same process for the lower Clip/Pin.



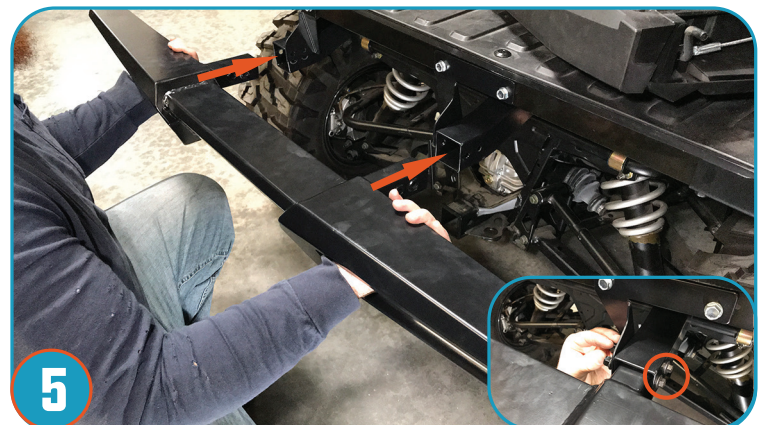
Insert mounting bars to brackets located under bed of Ranger and secure with provided hardware (4-Long Bolts/Nuts). Repeat for other mounting bar.



Remove the tailgate by unhooking the cables on each side of the vehicle and pull tailgate up and out and place in bed of your vehicle.



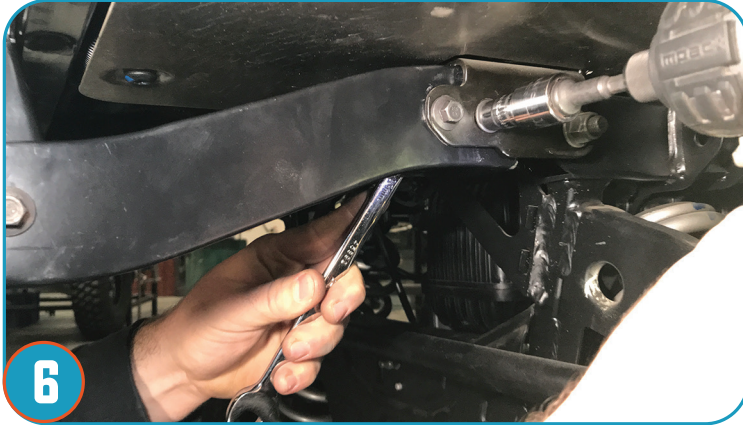
Using the provided hardware secure both brackets to rear of vehicle aligning bolt holes and mounting bars as shown.



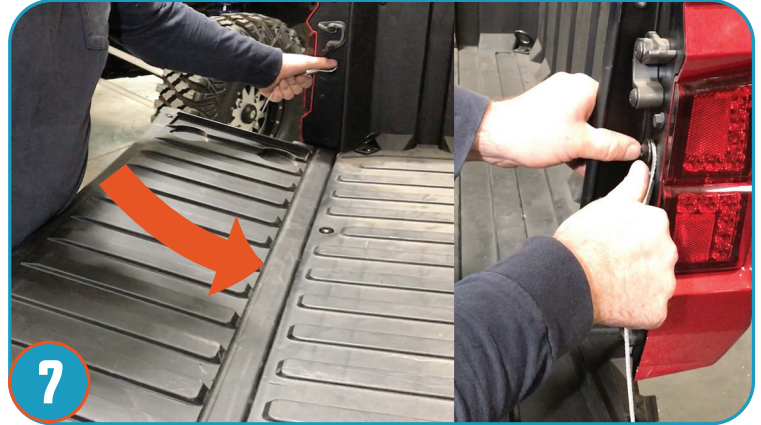
Place bumper on rear of vehicle inserting bumper arms into the mounting bars and secure with provided hardware (4 shorter bolts).



Ranger Rear Bumper Instructions (P1813P369MB)



Securely tighten all bolts and nuts applied during the install process.



Re-apply tailgate sliding down and into slots and sliding cable hoops over each side of tailgate as they were when removed in step 3.



- **Never** stick hands, head or arms outside of vehicle at any time when it is in motion.
 - **Always** wear and use proper safety equipment when using any Pro Armor product.
 - Improper use of directions and/or product can result in injury to yourself or damage to your vehicle.
 - **Disclaimer please read:** This product is sold without warranty expressed or implied. No warranty or representation is made as to the products ability to protect the user / occupant from any injury or death in any manner of use. The user assumes that risk. The effectiveness of this equipment is directly related to the manner in which it is installed, used, and / or maintained.
- Proper installation is solely the responsibility of the installer, and will not be assumed by Pro Armor.**
- If you have questions about your installation or are unable able to complete installation, contact Pro Armor Customer Service (888)312-7667 or have an authorized dealer or trained technician, inspect your installation.

⚠ WARNING