

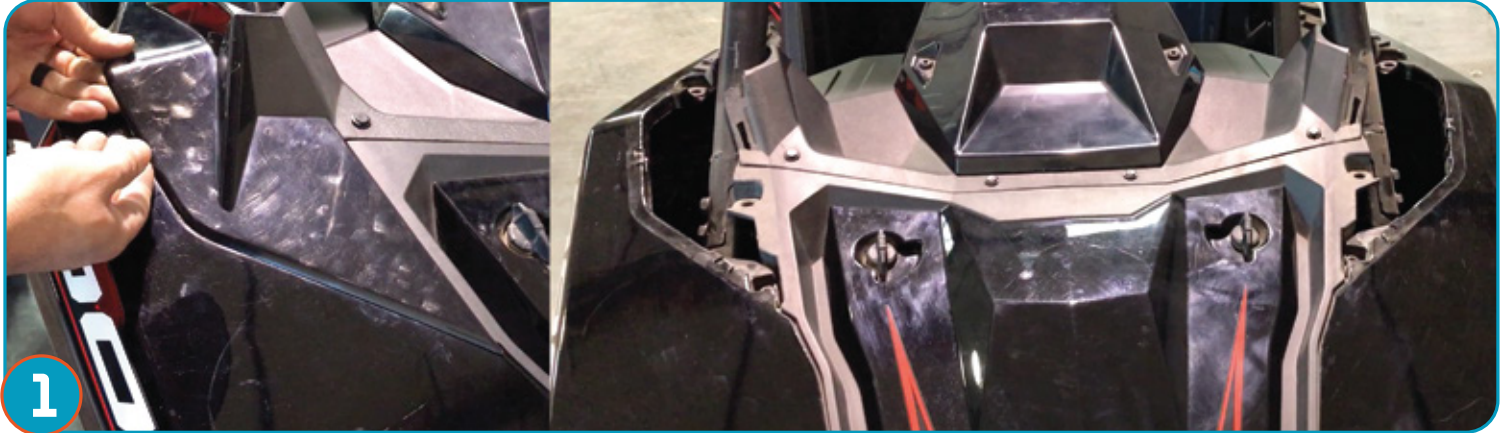


TOOLS REQUIRED:

- » RATCHET
- » TORQUE WRENCH
- » 15MM SOCKET
- » T40 TORX SOCKET
- » PUSH PIN PULLER
- » 17MM WRENCH

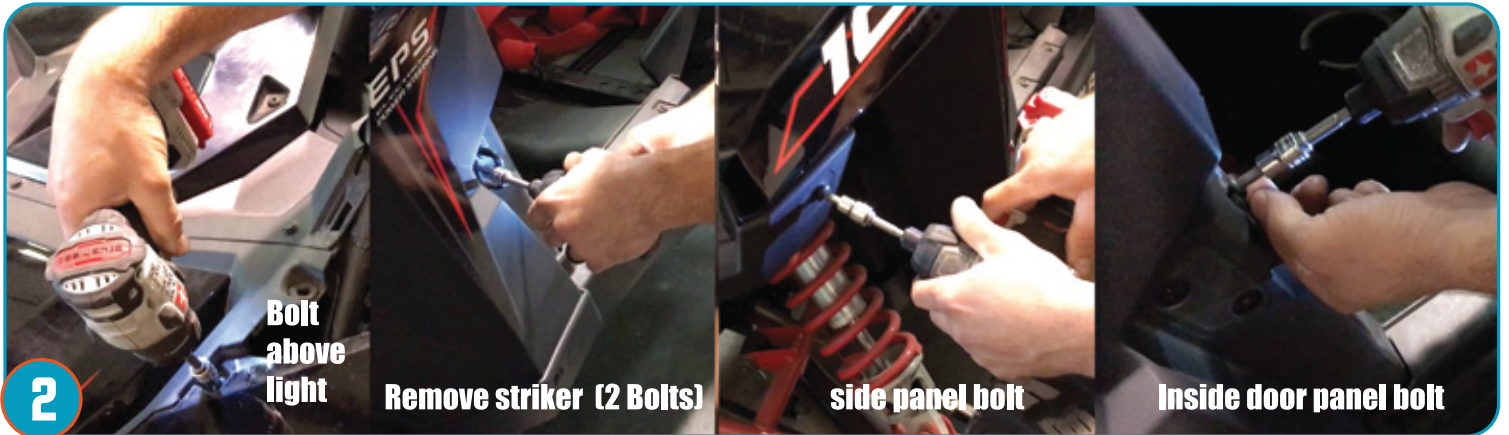
RS1 Solo Cage System Install Instructions (P186C036)

NOTE: Prior to installation, please verify if a revised version of this instruction sheet is available on proarmor.com.



1

Remove A-Pillar plastics on both sides of vehicle.



2

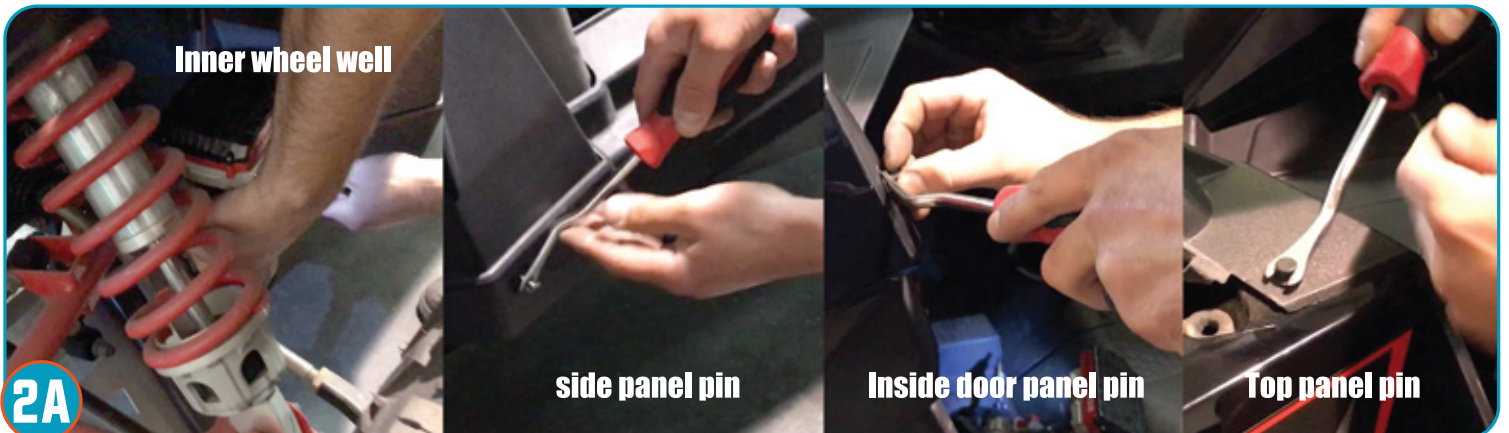
Bolt
above
light

Remove striker (2 Bolts)

side panel bolt

Inside door panel bolt

(DOOR SIDE) Remove 5 bolts to remove front wheel well plastics, including two bolts for the striker.



2A

Inner wheel well

side panel pin

Inside door panel pin

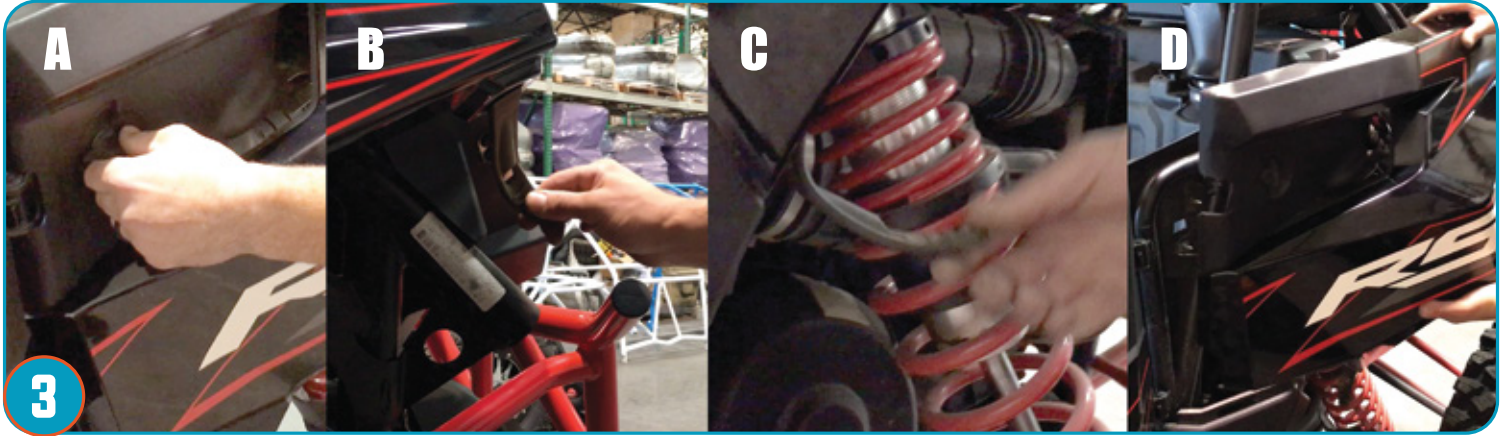
Top panel pin

Remove 2 bolts inside the wheel well toward the bottom of the chassis. Remove 3 push pins. Then, remove front side plastics from vehicle.





RS1 Solo Cage System Install Instructions (P186C036)



3 A. Twist quarter turn latch. B. Remove rubber latch inside rear wheel well and C. rear rubber latch. D. Remove rear plastics from vehicle and repeat for opposite side of vehicle.



4 (NON-DOOR SIDE) A. Remove bolt Side front plastics. B. Remove two bolts in wheel well. C. Remove push pins top of hood near A-pillar. D. Remove push pin on side of front plastics. E. Remove push pin at bottom of wheel well plastics.



4A (NON-DOOR SIDE) F. Remove top bolt for side plastics. G. Remove four bolts on inside panel. H. Repeat step 3 for rear section of non-door side of vehicle.

RS1 Solo Cage System Install Instructions (P186C036)



5 (NON-DOOR SIDE) I. Remove side panel plastics. J. Remove front fender plastics. Note: You will need to remove the shocks remote reservoirs, to do this remove the hose clamps that are securing them to the stock cage.



6 Twist (2) quarter turn latches to remove engine vent panel.



7 Remove 6 bolts to remove rear engine cover plastics.



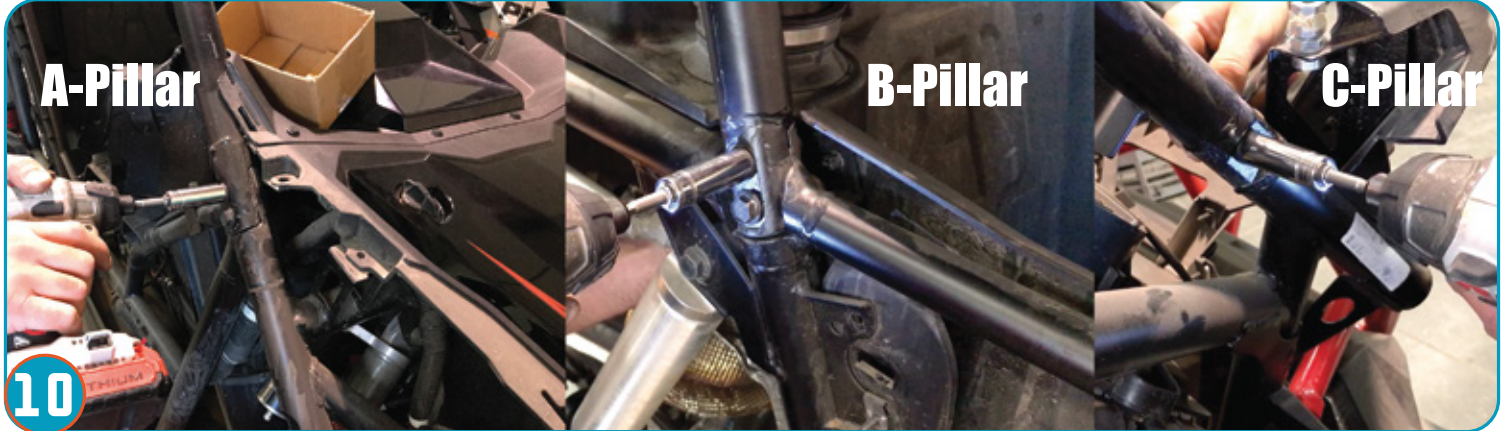
8 Remove 4 bolts to remove rear engine cover bracket, 2 per side of bracket.



9 Remove 2 bolts to separate Intake from stock cage. 1 bolt per side of intake.



RS1 Solo Cage System Install Instructions (P186C036)



(CAGE REMOVAL) Remove two bolts from each of the A,B, C-pillars on each side of vehicle.



Grab a helping hand, lift and remove stock cage from vehicle.



Following the removal of stock cage you will need to loosen the adjustable hose clamps located at both sides and pull upward to separate the intake from the vehicle.



Place your Pro Armor Solo Cage onto vehicle.





RS1 Solo Cage System Install Instructions (P186C036)



14 Re-apply A,B, C-pillar bolts removed in step 9. Torque to factory specs.



15 Re-apply intake, tightening the adjustable hose clamps removed in step 12 and two bolts from step 9 .



16 Re-apply engine cover bracket (4) bolts & engine cover plastics (6) bolts & engine vent panel, removed in step 6, 7 & 8.



17

Re-apply all plastics removed in steps 1-5.

⚠ WARNING

- **Never** stick hands, head, arms outside of vehicle at any time while in motion.
 - **Always** wear proper safety equipment when using any Pro Armor product.
 - Improper use of directions and/or product can result in injury to yourself or damage to your vehicle.
 - **Disclaimer please read:** This product is sold without warranty expressed or implied. No warranty or representation is made as to the products ability to protect the user / occupant from any injury or death in any manner of use. The user assumes that risk. The effectiveness of this equipment is directly related to the manner in which it is installed, used, and / or maintained.
- Proper installation is solely the responsibility of the installer, and will not be assumed by Pro Armor.**
- If you have questions about your installation or are unable able to complete installation, contact Pro Armor Customer Service (888)312-7667 or have an authorized dealer or trained technician, inspect your installation.