



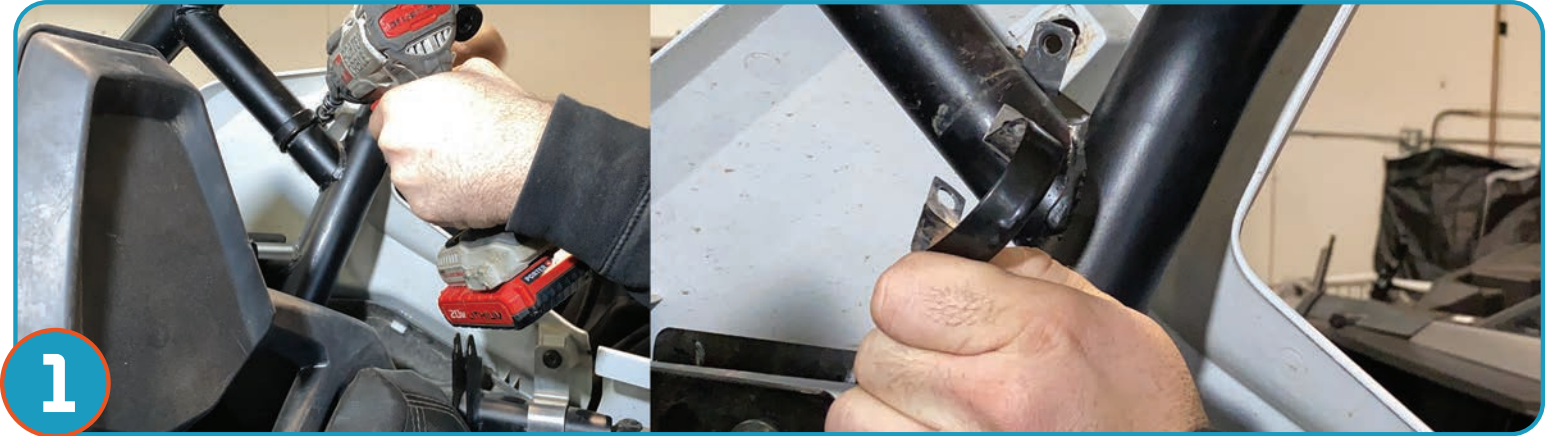
**CONTENTS:**

- 1- CAB SECTION
- 1- REAR SECTION
- 1- GLOVE BOX HINGE
- 4 - SOCKET HEAD CAP SCREWS

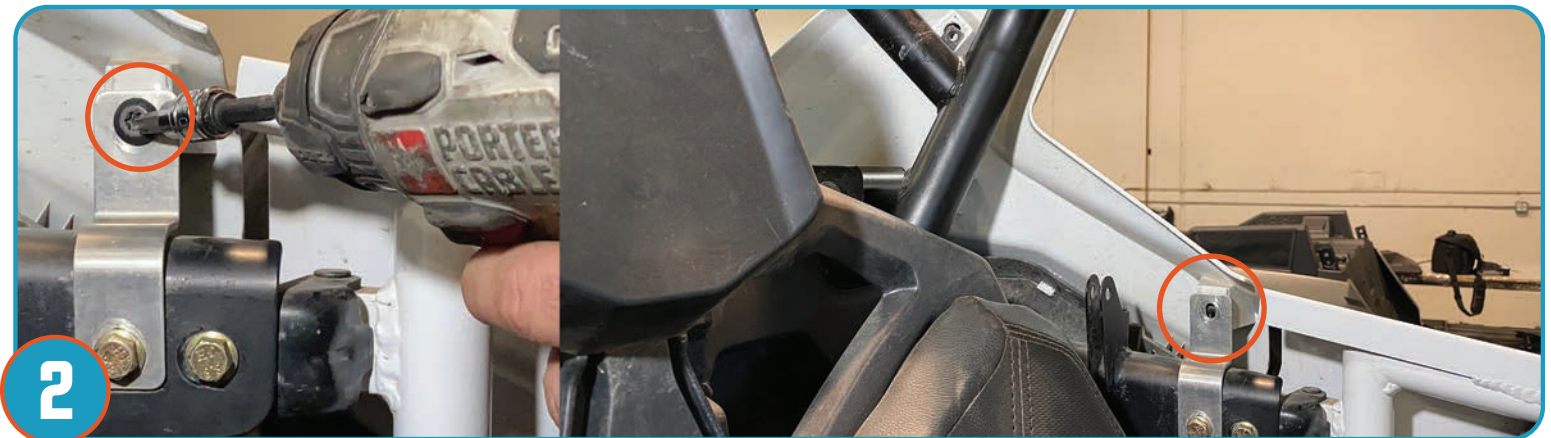
**TOOLS REQUIRED:**

- 1- 15MM SOCKET & WRENCH
- 2- 18MM SOCKET & WRENCH
- 3- 3/8" ALLEN WRENCH
- 4- T40 TORX BIT
- 5- CAR JACK
- 6- FLAT HEAD SCREW DRIVER

## PRO XP 4 CAGE SYSTEM INSTALL (P1910C049/P1910C050)



Start the Cage installation by first removing all bolts, clamps, pins & screws to remove OEM cage from vehicle. First, remove the screws from the clamps located near the rear headrests on each side of your vehicle, using a Torx bit.



Remove the top screw of rear door bracket as shown. Repeat for opposite side of vehicle.



Remove pins (3) located near rear tail-lights and in rear wheel well, separating plastics from rear section of vehicle. Repeat for opposite side of vehicle.





## PRO XP 4 CAGE SYSTEM INSTALL (P1910C049/P1910C050)



4

Using a flathead screw driver un-clip the rear side panel plastics (located behind rear door bracket) on both sides of vehicle, separating the plastics from the vehicle. Clips may be easiest to unhinge from wheel well. Remove side plastics and set aside. Repeat for opposite side.



5

Remove bolts (1) and pins (3) located near rear D-pillar, separating plastics from rear section of vehicle. For additional clearance you can use a bungee-cord to hold plastics allowing for more operating space. Repeat for opposite side of vehicle.



6

Remove A-pillar boots sliding them up the A-pillar and disconnect speaker wire on both sides of vehicle.

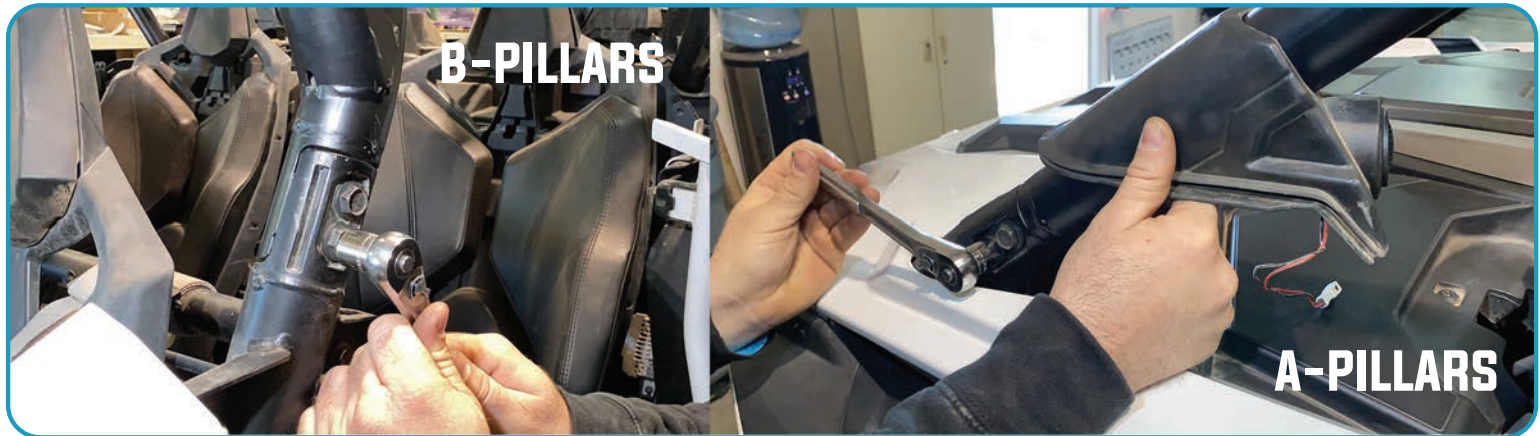




## PRO XP 4 CAGE SYSTEM INSTALL (P1910C049/P1910C050)



Remove cage bolts starting at the rear D-pillars (4) C-pillars (4).



Remove cage bolts B-pillars (4) A-pillars (4). 16-bolts total.

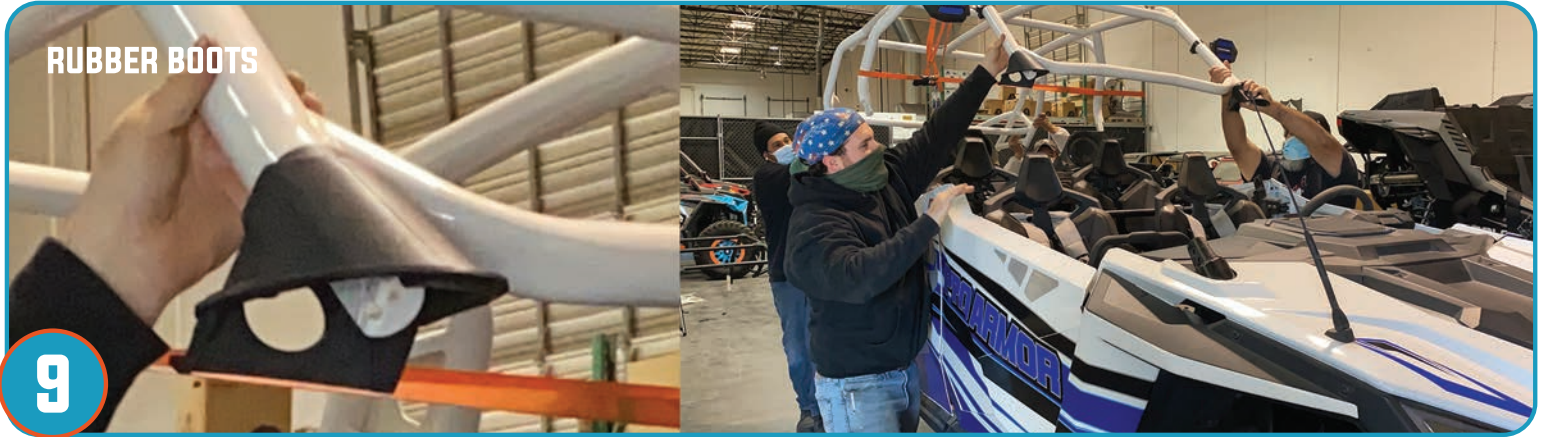
\*\*\*Following the removal of the stock cage install the replacement glove box bracket



With all the bolts removed from the stock cage and with help from 3 friends, carefully lift and remove stock cage.



**PRO XP 4 CAGE SYSTEM INSTALL (P1910C049/P1910C050)**



**9**

\*Remove A-pillar boots from stock cage and slide them onto new cage prior to lifting cage on to vehicle. Place your new Pro Armor Pro XP 4 cage system in place lining up the pillars and bolt holes accordingly. Placing the D-pillar in place first will assist in ease of install.

\*\*\*NOTE: REMOVE THE GLOVE BOX LINER TO ACCESS THE HINGE\*\*\*



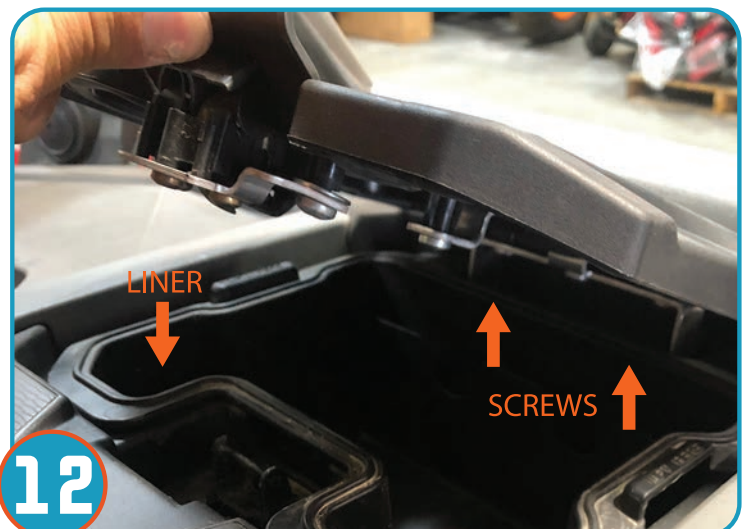
**10**

Remove glove box liner and remove (2) screws at the base of the hinge separating it from the plastics. Remove (4) screws holding the hinge to glove box panel/lid.



**11**

Replace new hinge using the (4) screws removed in step 10. Slide hinge between rubber gasket and glove box plastics.



**12**

Re-insert the glove box liner then re-insert glove box lid with new hinge. The (2) screws removed in step 10 will not be re-used. Proceed with Pro Armor cage install.





## PRO XP 4 CAGE SYSTEM INSTALL (P1910C049/P1910C050)



Using the bolts removed from stock cage, re-insert and tighten bolts of cage starting at the A-pillar (4-bolts) then B-pillar (4-bolts) for each side of vehicle.



Re-insert cage bolts for C-pillars (4) D-pillars (4). 16-bolts total. Refer to torque specs on last page of cage install instructions.

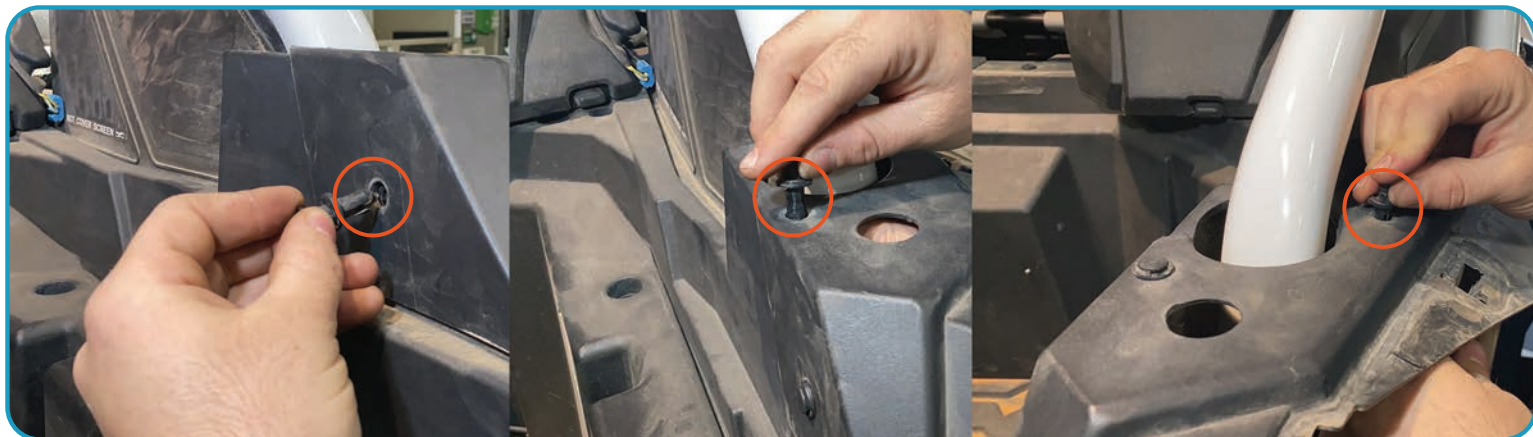


Remove the bungee-chords (optional use) and re-apply bolts and pins for rear plastics you removed in step 5. Bolts (1) and pins (3) and repeat for opposite side of vehicle.





## PRO XP 4 CAGE SYSTEM INSTALL (P1910C049/P1910C050)

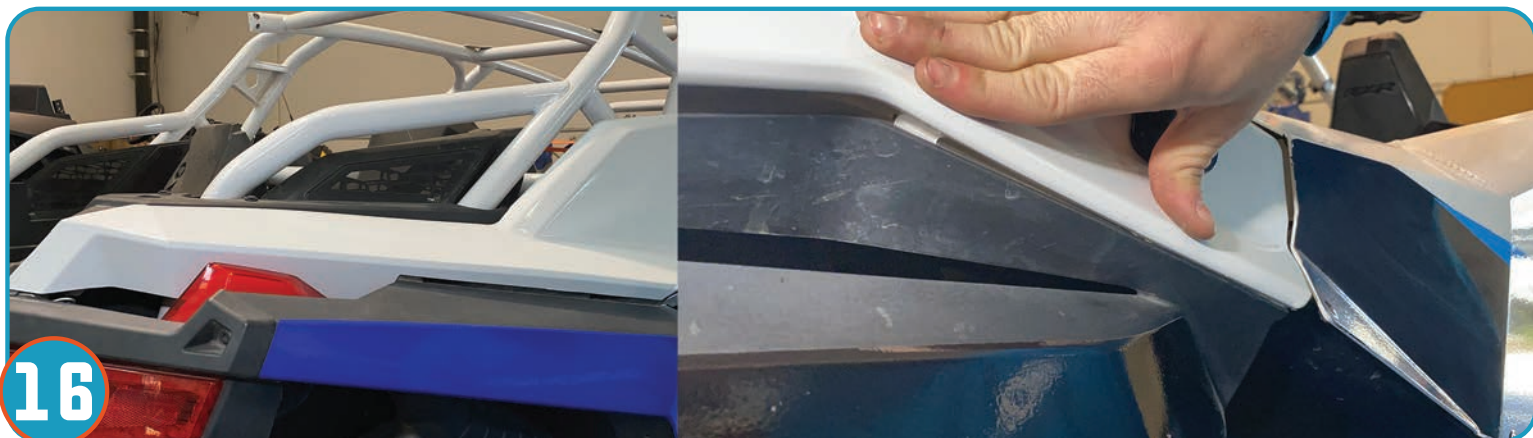


Re-insert push pins for rear plastics you removed in step 5. Pins (3) and repeat for opposite side of vehicle.



**15**

Re-attach clamp removed in step 1 around C-pillar with bolt as shown and repeat for opposite side of vehicle. Leave at location for following steps.



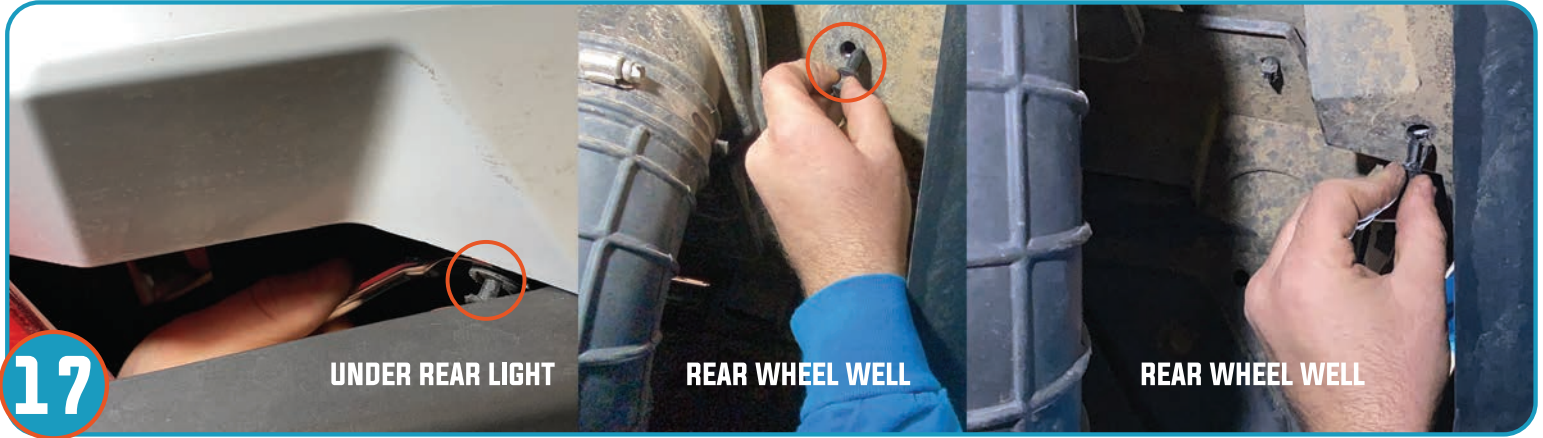
**16**

Re-apply side panel plastics being sure they properly line up and click in place at three locations along the plastics. Reference step 4. Repeat for opposite side.





## PRO XP 4 CAGE SYSTEM INSTALL (P1910C049/P1910C050)



Replace pins (3) located near rear tail-lights and in rear wheel well, separating plastics from rear section of vehicle. Reference step 3. Repeat for opposite side of vehicle.



Re-insert bolts removed for clamp in step 1 and tighten, securing C-pillar plastics to cage.



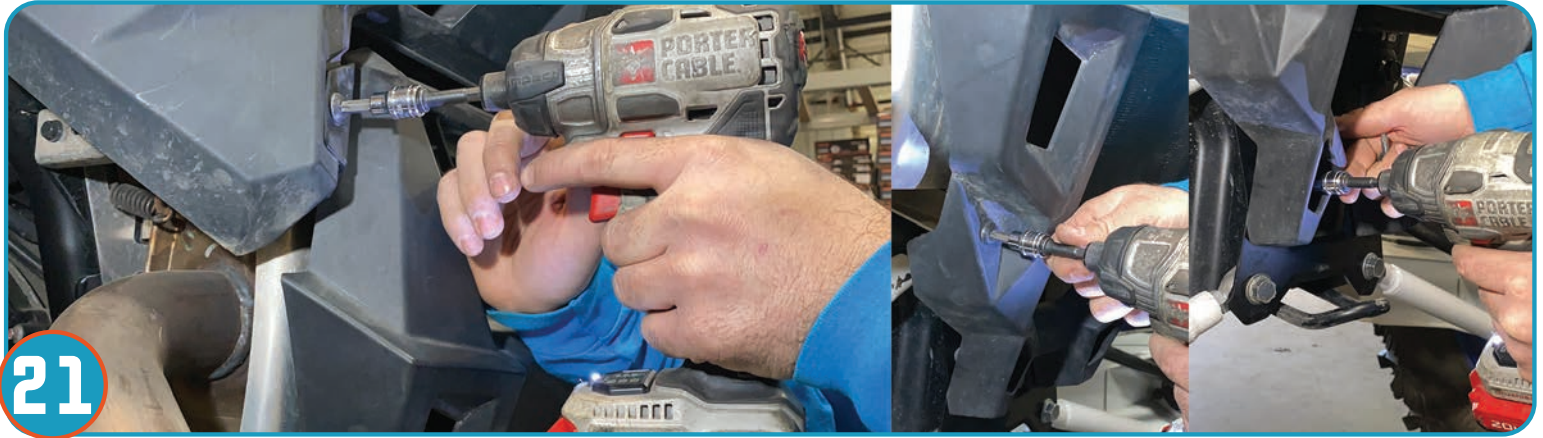
Re-insert bolts removed for rear door bracket in step 2 and tighten, securing C-pillar plastics to cage.



Re-connect the A-pillar speaker wire and maneuver boot (Reference step 6) into groove to secure position as shown. Repeat for opposite side.



**PRO XP 4 CAGE SYSTEM INSTALL (P1910C049/P1910C050)**



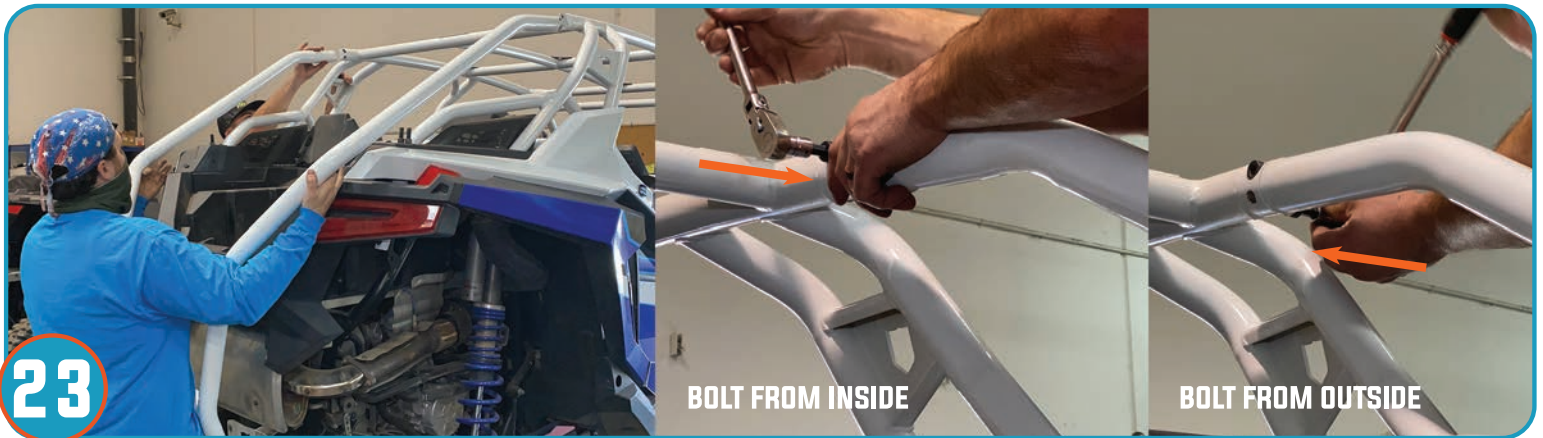
**21**

Remove 6 bolts on the rear exhaust panel cover plastics on the rear of the vehicle allowing access to radius rod plate.



**22**

Remove cover providing access to radius rod plate, jack up rear of vehicle and remove 4 bolts securing the rods to the plate. Allow the radius rods to gently fall to floor and discard plate. Plate will no longer be required.



**23**

BOLT FROM INSIDE

BOLT FROM OUTSIDE

Position rear cage section lining up top tubing and thread/tighten 4 bolts joining the rear section to main cage section. 2 bolts per side. An extra helping hand to position rear section will assist in ease of installation.



## PRO XP 4 CAGE SYSTEM INSTALL (P1910C049/P1910C050)



**24** Position radius rods to line up to chassis and plate holes, lowering or raising the jack height as needed to align and allow space or tension release. Push bolts (4) through ensuring proper alignment.



Align the lower rods and push bolts through and tighten all 4 bolts holding the nut in place from behind plate.



**25** Re-install rear muffler cover plastics applying the bolts (6) removed in step 22. Tighten to secure. Cage install is complete.





## PRO XP 4 CAGE SYSTEM INSTALL (P1910C049/P1910C050)



\*TORQUE ALL TO MFG SPECS FOR CAGE AND REAR SECTION:

\*\*3/8" ALLEN HEAD BOLTS ON THE TOP OF THE REAR SECTION SHOULD BE TORQUED TO 70 FT/LBS

- **Never** stick hands, head or arms outside of vehicle at any time when it is in motion.
  - **Always** wear and use proper safety equipment when using any Pro Armor product.
  - Improper use of directions and/or product can result in injury to yourself or damage to your vehicle.
  - **Disclaimer please read:** This product is sold without warranty expressed or implied. No warranty or representation is made as to the products ability to protect the user / occupant from any injury or death in any manner of use. The user assumes that risk. The effectiveness of this equipment is directly related to the manner in which it is installed, used, and / or maintained.
- Proper installation is solely the responsibility of the installer, and will not be assumed by Pro Armor.**
- If you have questions about your installation or are unable able to complete installation, contact Pro Armor Customer Service (888)312-7667 or have an authorized dealer or trained technician, inspect your installation.

**⚠ WARNING**