



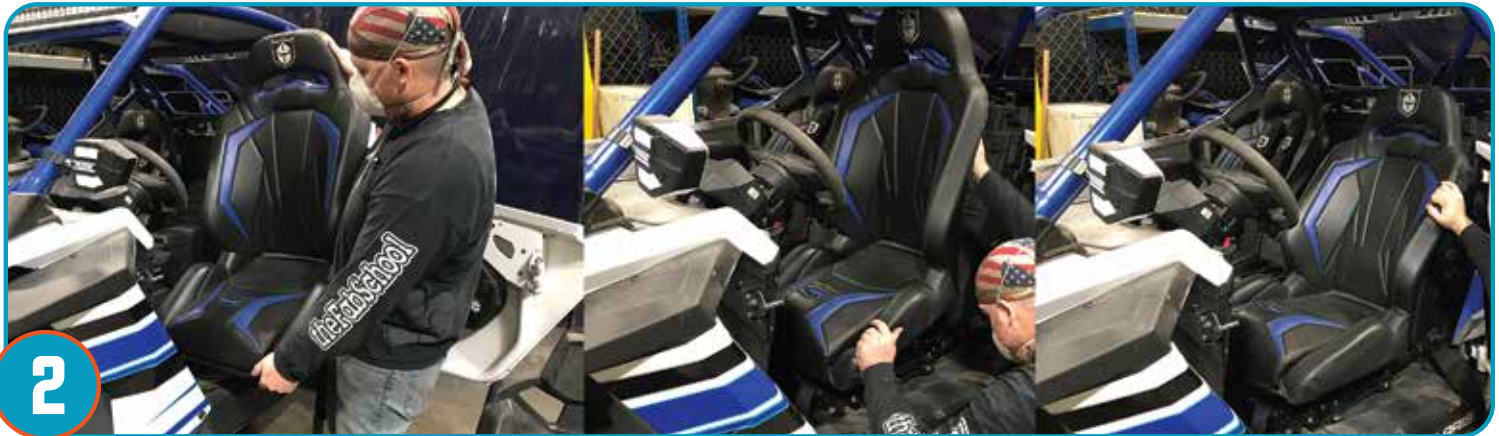
G-FORCE PRO SEAT INSTALL INSTRUCTIONS (P199S193)

Note: For further information on installation instructions please visit our website www.proarmor.com



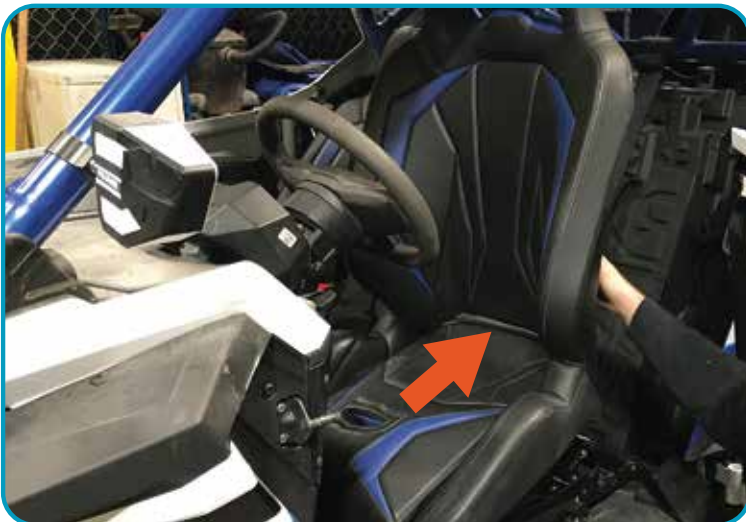
1

Remove stock seat by lifting the lever located under the front base of stock seat. Tilt headrest, then base forward to extract seat from base.



2

Place the G-Force Pro Seat, sliding the seat cushion in first to catch the seat base, then lowering the seat toward rear of vehicle clicking seat into place.



To remove the G-Force Pro seat insert hand at base and press down on the 2 plastic hooks holding the seat in. Lean forward and extract seat from Vehicle.

⚠ WARNING

- **Never** stick hands, head or arms outside of vehicle at any time when it is in motion.
- **Always** wear and use proper safety equipment when using any Pro Armor product.
- Improper use of directions and/or product can result in injury to yourself or damage to your vehicle.
- **Disclaimer please read:** This product is sold without warranty expressed or implied. No warranty or representation is made as to the products ability to protect the user / occupant from any injury or death in any manner of use. The user assumes that risk. The effectiveness of this equipment is directly related to the manner in which it is installed, used, and / or maintained.
Proper installation is solely the responsibility of the installer, and will not be assumed by Pro Armor.
- If you have questions about your installation or are unable able to complete installation, contact Pro Armor Customer Service (888)312-7667 or have an authorized dealer or trained technician, inspect your installation.



CONTENTS:
1- G-FORCE PRO REAR SEAT

TOOLS REQUIRED:
T40 TORX WRENCH
10MM WRENCH
10MM SOCKET
RATCHET

G-FORCE PRO REAR SEAT INSTALL INSTRUCTIONS (P1910S194)

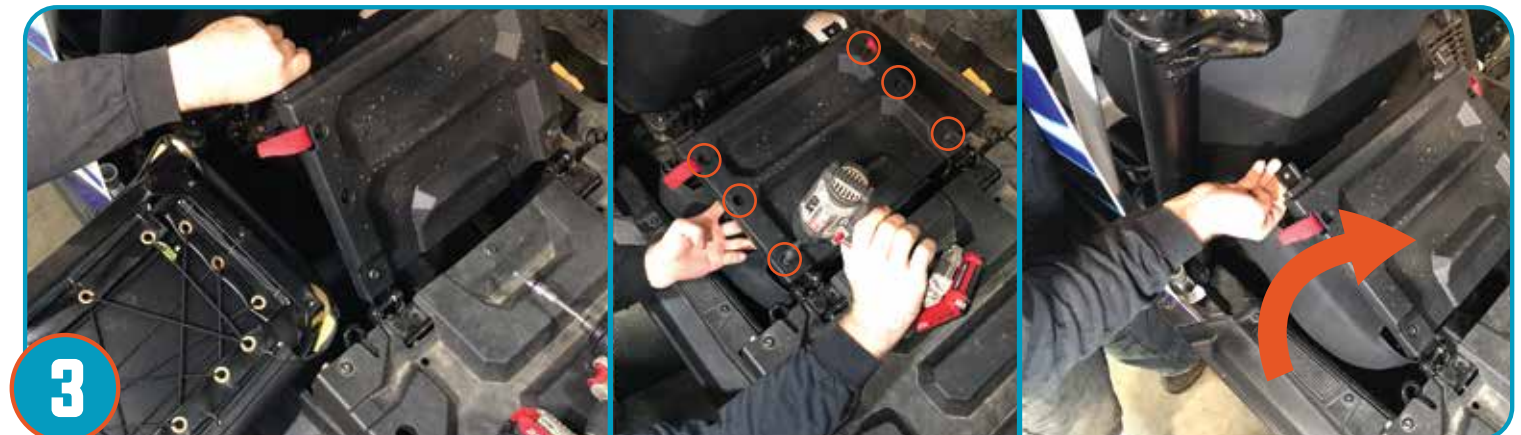
Note: For further information on installation instructions please visit our website www.proarmor.com



Remove stock seat by lifting the lever located behind the headrest of stock seat. Tilt seat forward to remove.



Fold stock seat base forward and remove 6 bolts to remove the stock seat base.



Place the Pro Armor Pro XP Seat base lining up bolt holes. Using the bolts removed in step 2, apply 6 bolts securing your new seat base in place. Fold base back in seating position.



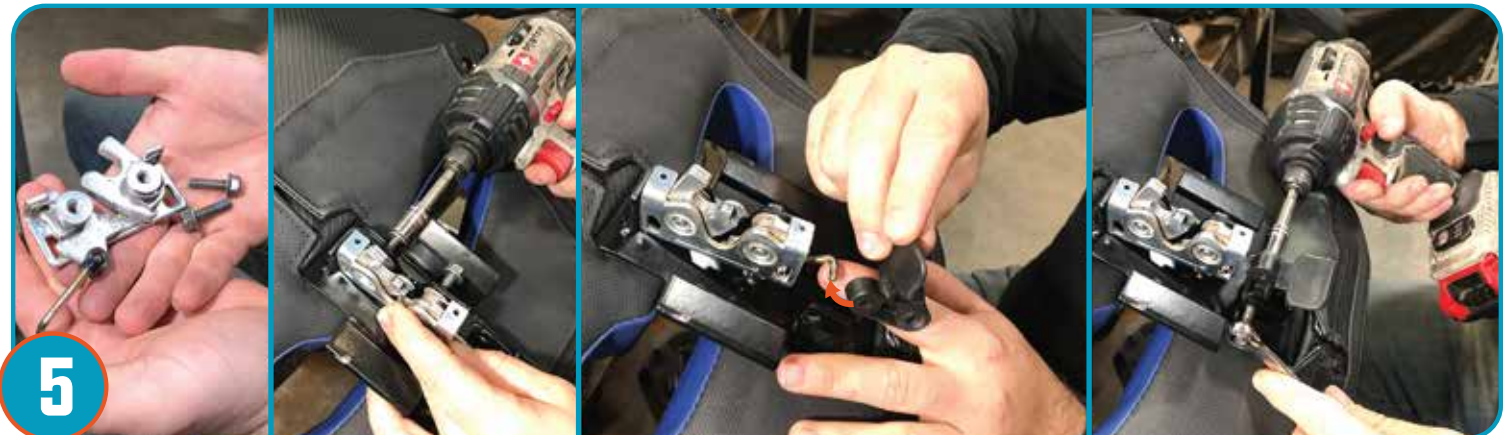
G-FORCE PRO REAR SEAT INSTALL INSTRUCTIONS (P1910S194)

Note: For further information on installation instructions please visit our website www.proarmor.com



4

Remove headrest plastics of stock seat to access latch mechanism. Remove bolt shown to remove release lever. Remove two bolts shown to remove latch mechanism from stock seat.



5

Using the removed latch mechanism, position latch mechanism to rear seat headrest of new suspension seat as shown. Using removed hardware in step 4, Insert (2) bolts removed from step 4 to secure latch mechanism to new seat. Position release lever on as shown and secure with bolt removed in step 4.



6

Place seat in vehicle hooking the base in place and latching the headrest in place confirming it is secure. Repeat for opposite side rear seat.

⚠ WARNING

- **Never** stick hands, head or arms outside of vehicle at any time when it is in motion.
 - **Always** wear and use proper safety equipment when using any Pro Armor product.
 - **Improper** use of directions and/or product can result in injury to yourself or damage to your vehicle.
 - **Disclaimer please read:** This product is sold without warranty expressed or implied. No warranty or representation is made as to the products ability to protect the user / occupant from any injury or death in any manner of use. The user assumes that risk. The effectiveness of this equipment is directly related to the manner in which it is installed, used, and / or maintained.
- Proper installation is solely the responsibility of the installer, and will not be assumed by Pro Armor.**
- If you have questions about your installation or are unable able to complete installation, contact Pro Armor Customer Service (888)312-7667 or have an authorized dealer or trained technician, inspect your installation.