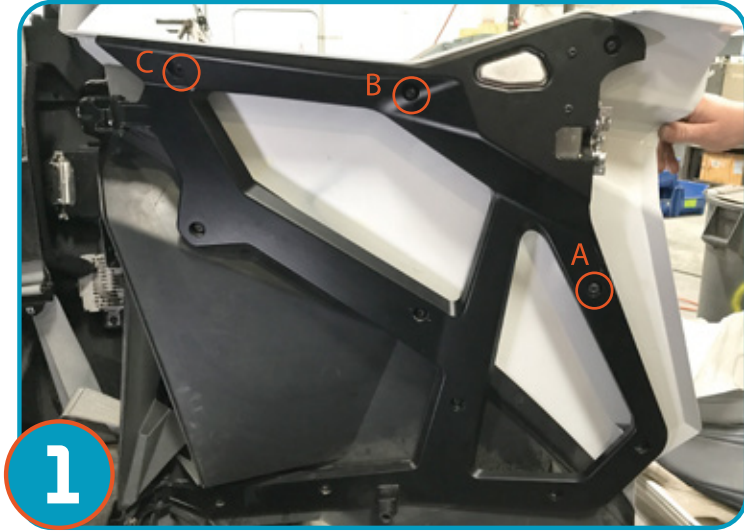


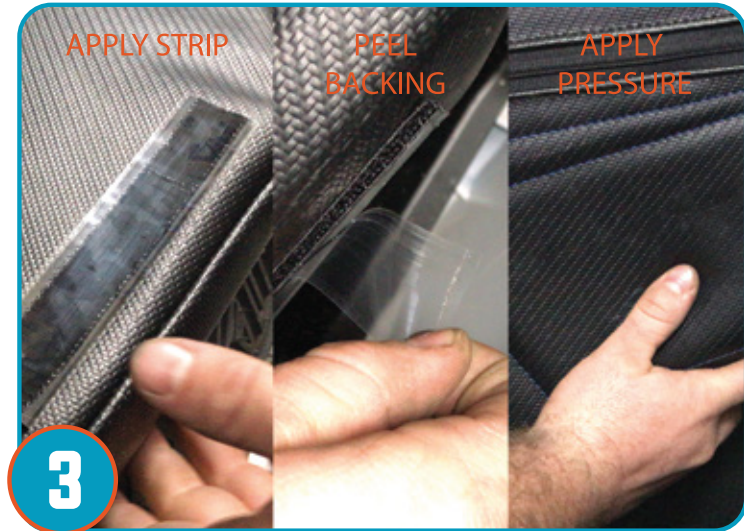


PRO XP STOCK REAR DOOR KNEE PADS (P1910Y331)

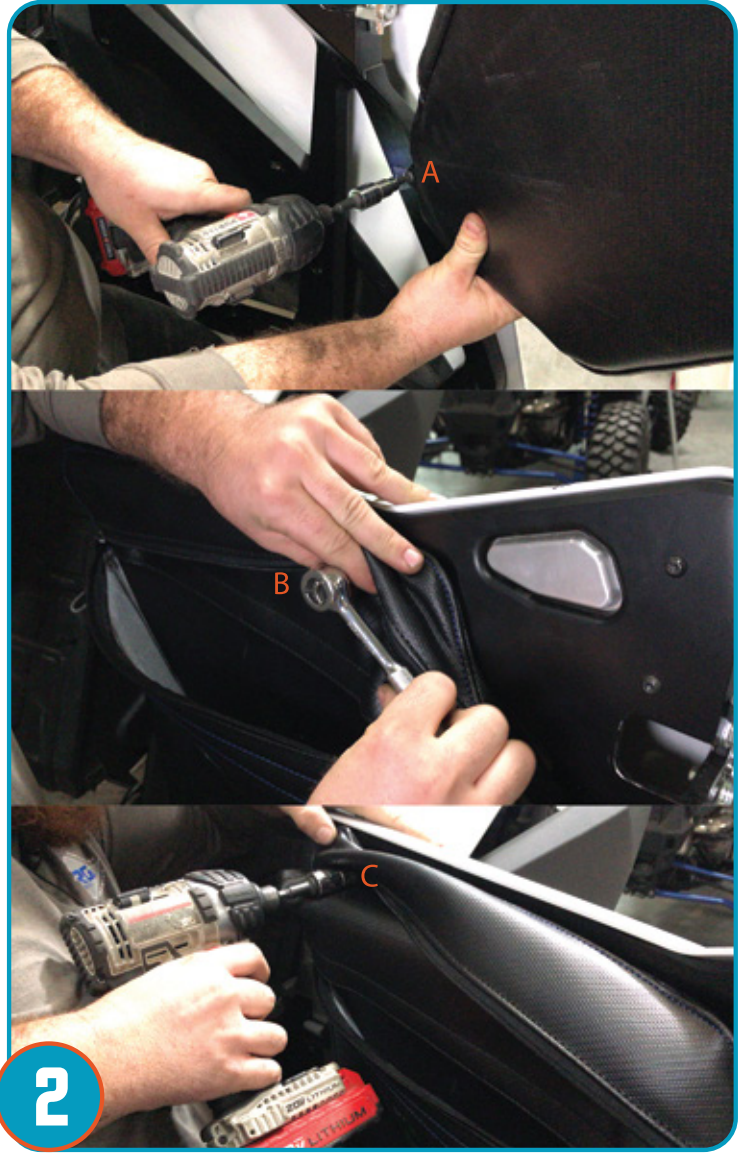
Note: Door bags can be installed with door mounted or unmounted to vehicle.



Remove three bolts (at locations pictured) holding door panel to door frame as shown.



Apply the provided adhesive strip to the door bag along the bottom of door bag as shown, peel back the protective strip and press on the door bag adhering the strip to the door panel, firmly. Installation is now complete. Repeat for opposite door.



Using the provided three bolts place door bag in place & apply bolts through the zippered compartment aligning inside bolt grommets to the same bolt holes (A,B,C) on door frame that were removed in step 1.



- **Never** stick hands, head or arms outside of vehicle at any time when it is in motion.
- **Always** wear and use proper safety equipment when using any Pro Armor product.
- Improper use of directions and/or product can result in injury to yourself or damage to your vehicle.
- **Disclaimer please read:** This product is sold without warranty expressed or implied. No warranty or representation is made as to the products ability to protect the user / occupant from any injury or death in any manner of use. The user assumes that risk. The effectiveness of this equipment is directly related to the manner in which it is installed, used, and / or maintained.
- **Proper installation is solely the responsibility of the installer, and will not be assumed by Pro Armor.**
- If you have questions about your installation or are unable able to complete installation, contact Pro Armor Customer Service (888)312-7667 or have an authorized dealer or trained technician, inspect your installation.

⚠ WARNING