



## Baja Cage Instructions (P188C045/P188C046/P194C023/P194C025)

\*\*\*NOTE: Prior to installation, please verify if a revised version of this instruction sheet is available on [proarmor.com](http://proarmor.com).\*\*\*

### Vehicle Preparation

1. Remove seats, doors, rear door strikers and harnesses from stock cage.
2. Remove side panel plastics front and rear by removing push-pins and screws (ref. step 9)
3. Save all removed hardware to reattach your new cage.



Remove the hardware that attaches the existing roll cage to A-B-C-D pillars on the chassis of the vehicle. Save all of this hardware, you will need it to attach the new Pro Armor cage. Once all hardware is removed, detach and remove the old cage from the vehicle. It takes three people (XP4 1000) to safely handle and detach the cage.



Once the existing roll cage is removed, attach the Pro Armor Cage to the vehicle chassis using the existing hardware at the A and C pillar (Hand tighten). Again, it takes two people to safely handle the cage.



Remove rear (D-Pillar) access panels (2) located in cargo bed.



Firmly tighten A-pillar bolts (x2) for driver and passenger side bungs, to manufacturer's torque specs to secure the cage firmly to the chassis.



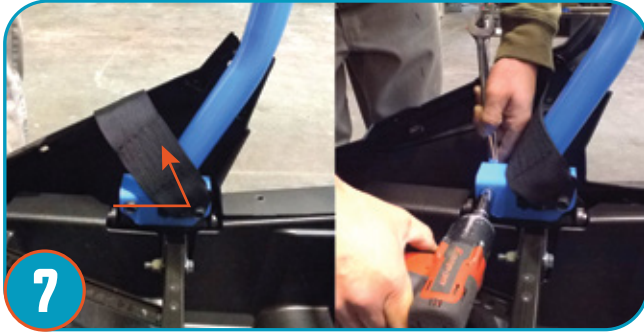
Firmly tighten D-pillar bolts (x2) for driver and passenger side bungs, to manufacturer's torque specs to secure the cage firmly to the chassis.



Re-apply rear (D-Pillar) access panels (2) located in cargo bed.



## Baja Cage Instructions (P188C045/P188C046/P194C023/P194C025)



7

You will want to secure the lap belts for your Pro Armor harnesses on this step. Making sure harness belts are at a 45 degree angle once tightened. Firmly tighten B-pillar bolts (x2) for driver and passenger side to manufacturer's torque specs to secure the cage firmly to the chassis.



8

This step you will re-hang your rear doors using bolts you originally removed. Firmly tighten C-pillar bolts (x2) for driver and passenger side bungs, to manufacturer's torque specs to secure the cage firmly to the chassis.



9

Re-apply side panel plastics for rear entry locations using the removed push-pins and Screws.



10

Insert front door hinges first by inserting the top (A) and bottom (B) inserts, position the hinge (C) Insert Door Hinge bolt and Insert door hinge clip carefully into the bottom of hinge bolt. Repeat for opposite front door.



11

Re-apply B-Pillar plastics using the removed push-pins and Screws.



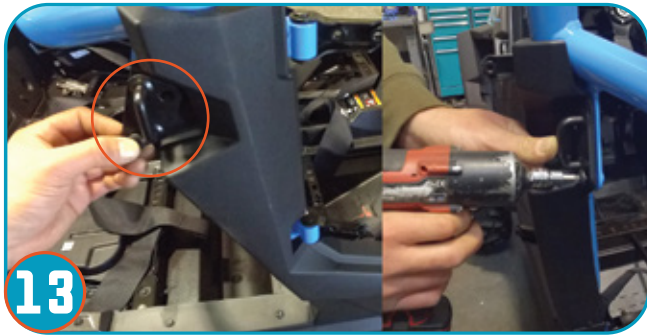
12

Insert B-pillar screw on inside of hinge securing plastics.

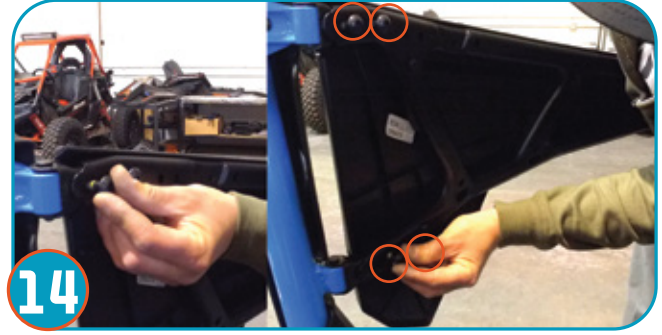




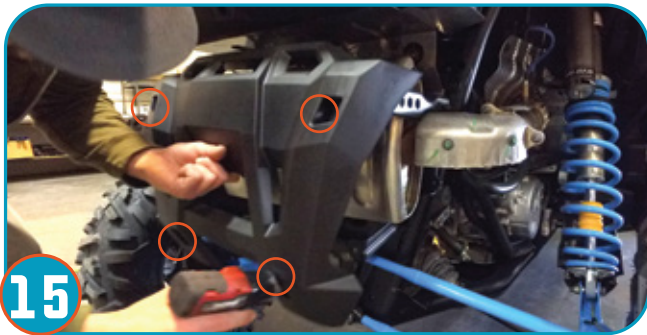
## Baja Cage Instructions (P188C045/P188C046/P194C023/P194C025)



**13** Replace door strikers for the rear doors using existing hardware.



**14** Re-mount the doors to door hinge using the four screws during removal process. Two top, two bottom screws. Leave loose to adjust for proper adjustment for front door striker, then tighten.



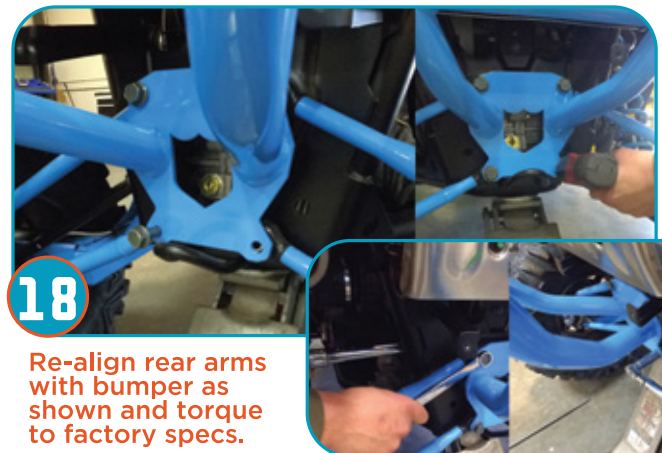
**15** Remove Rear exhaust panel. Four screws and set aside.



**16** Using a car jack, raise rear of car to lift tires slightly off the ground. Remove the radius rod plate to allow arms to move freely.



**17** Once radius rod plate has been removed let arms fall to allow positioning of rear section. This will be easily accomplished with help from a friend while you insert screws to upper section of cage connecting rear to the main cage while resting radius rod plate on tow hook. Secure top of rear section with provided bolts (2 per side).



**18** Re-align rear arms with bumper as shown and torque to factory specs.



## Baja Cage Instructions (P188C045/P188C046/P194C023/P194C025)



19

Re-apply rear plastics using the four screws during the removal.



20

Verify all bolts securing the cage to the chassis are torqued to manufacturer's specs.



There should be no unused hardware from your existing cage left over. All bolts and hardware should be tightened, and the cage should be periodically inspected before use to ensure that the cage remains affixed securely to the vehicle chassis. If you have any questions, contact Pro Armor Customer support at 1(888) 312-7667 or have an authorized dealer or trained technical inspect your installation.

### Disclaimer

Please read: This product is sold without warranty expressed or implied. No warranty or representation is made as to the products ability to protect the user / occupant from any injury or death in any manner of use. The user assumes that risk. The effectiveness of this equipment is directly related to the manner in which it is installed, used, and / or maintained. Proper installation is solely the responsibility of the installer, and will not be assumed by Pro Armor®.

### ⚠ WARNING

1. The Pro Armor (Cage) is designed to replace your stock cage. The primary purpose of a UTV cage is to reduce the possibility of a seat-belted operator or passenger being crushed in a vehicle roll over. The Pro Armor (Cage) is certified to meet ANSI/ROHVA-1 Roll over Protective Structure (ROPS) standards.
2. If you have any questions about your installation or are unable to complete installation, contact Pro Armor Customer Service or have an authorized dealer or trained technicians inspect your installation. Do NOT use your UTV if installation of the cage is incomplete.
3. The Pro Armor (Cage) is designed to work with Pro Armor seat belts, along with proper preparation and responsible driving from the driver. Pro Armor recommends you follow all manufacturer instructions when preparing to ride and during operation.
4. Please periodically inspect the roll cage and bumper hardware for tightness. Do not use if hardware is loose or missing and if the cage is not affixed properly and securely tightened to UTV frame.
5. Never use the vehicle without the cage securely in place.
6. Never stick hands, head or arms outside of vehicle at any time when it is in motion.
7. Always wear and use proper safety equipment when using any Pro Armor product.
8. Improper use of directions and/or product can result in injury to yourself or damage to your vehicle.

