



PRO XP INTRUSION BAR INSTRUCTIONS (P199U303MB)

NOTE: Prior to installation, please verify if a revised version of this instruction sheet is available on proarmor.com.



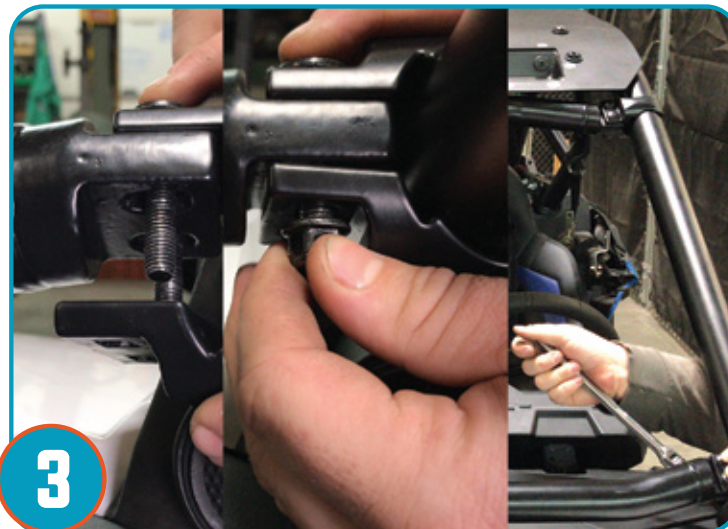
1

Place the intrusion bar over front of cage as shown, running bolts through upper clamp and hand tightening bolts to get you started and ease of install.



2

Running bolts through clamp, tighten 2 bolts per clamp to hold each clamp in position. Do not completely tighten until desired position and adjustments are completed.



3

Running bolts through opposite clamps, tighten 2 bolts per clamp to hold each clamp in position. Make final adjustments and desired placement, then tighten firmly as your last step.



CLAMP ORDER
FOR EASE OF ADJUSTMENT

- **Never** stick hands, head or arms outside of vehicle at any time when it is in motion.
 - **Always** wear and use proper safety equipment when using any Pro Armor product.
 - Improper use of directions and/or product can result in injury to yourself or damage to your vehicle.
 - **Disclaimer please read:** This product is sold without warranty expressed or implied. No warranty or representation is made as to the products ability to protect the user / occupant from any injury or death in any manner of use. The user assumes that risk. The effectiveness of this equipment is directly related to the manner in which it is installed, used, and / or maintained.
- Proper installation is solely the responsibility of the installer, and will not be assumed by Pro Armor.**
- If you have questions about your installation or are unable able to complete installation, contact Pro Armor Customer Service (888)312-7667 or have an authorized dealer or trained technician, inspect your installation.

⚠ WARNING