



CONTENTS:

(1) - PRO XP WINDSHIELD

HARDWARE:

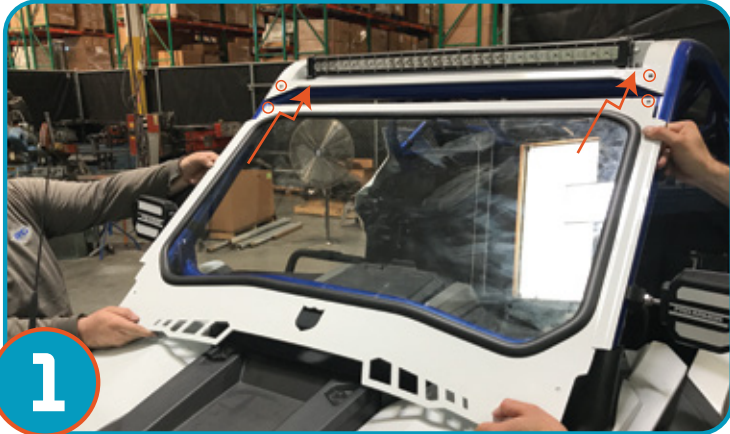
(1) - LEFT CLAMP

(1) - RIGHT CLAMP

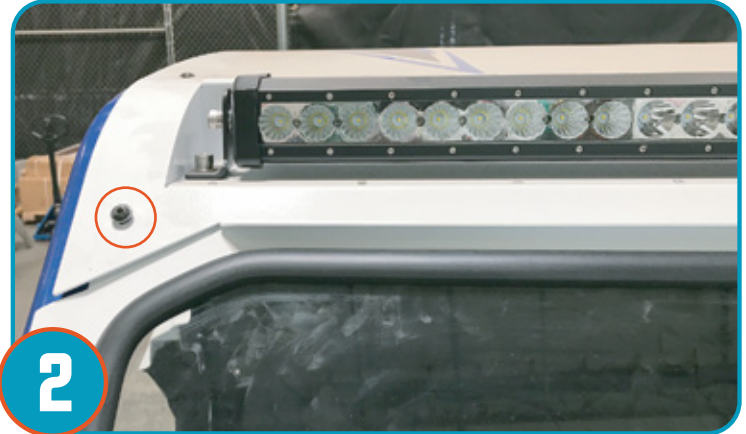
(2) - M6 NYLOC NUTS (4) - M6 16MM BOLTS

PRO XP WINDSHIELD INSRUCTIONS (P199W463)

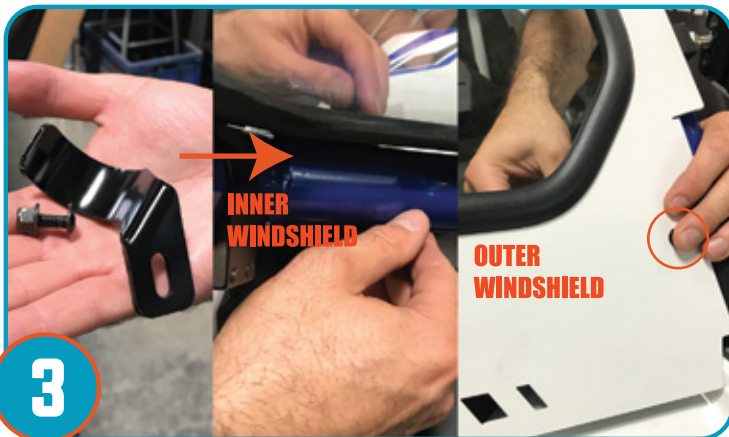
NOTE: The roof comes with rubber washers that are used in the same holes that the windshield mount. When installing the windshield. The frame of the windshield replaces the washers supplied with roof.



Place windshield on vehicle sliding the top of windshield under roof, lining up the bolt holes. The roof comes with rubber washers that are used in the same holes that the windshield mount. When installing the windshield. The frame of the windshield replaces the washers supplied with roof.



Tighten upper windshield with (2) provided bolts. One on each top corners as shown.



Using the provided (2) brackets/bolts, secure the lower windshield tightening the bracket, threading bolt from outer windshield through bolt hole and through bracket /nut on inside securing windshield to cage. One Bracket per bottom of windshield.



- **Never** stick hands, head or arms outside of vehicle at any time when it is in motion.
- **Always** wear and use proper safety equipment when using any Pro Armor product.
- Improper use of directions and/or product can result in injury to yourself or damage to your vehicle.
- **Disclaimer please read:** This product is sold without warranty expressed or implied. No warranty or representation is made as to the products ability to protect the user / occupant from any injury or death in any manner of use. The user assumes that risk. The effectiveness of this equipment is directly related to the manner in which it is installed, used, and / or maintained.

⚠ WARNING

Proper installation is solely the responsibility of the installer, and will not be assumed by Pro Armor.

- If you have questions about your installation or are unable able to complete installation, contact Pro Armor Customer Service (888)312-7667 or have an authorized dealer or trained technician, inspect your installation.