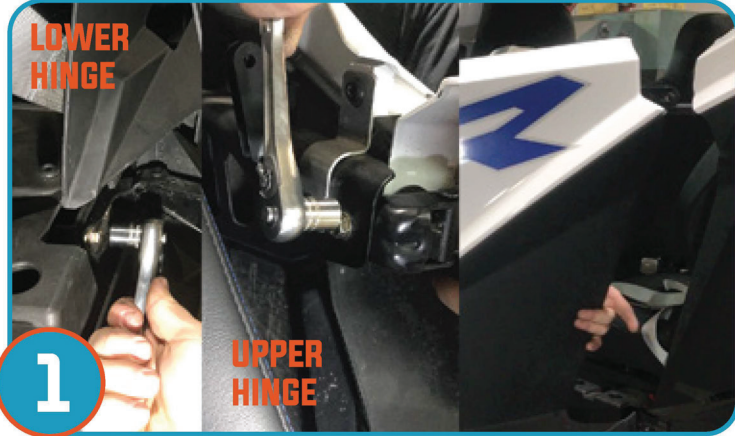




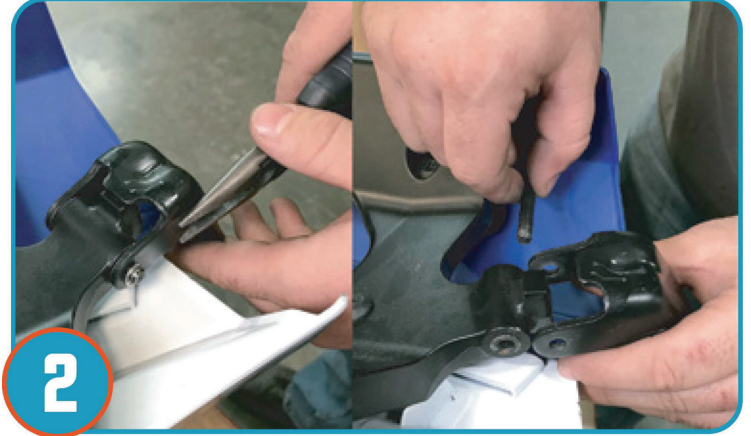
***NOTE: Install Rear doors, then front doors for ease of install

TURBO R 4 INSTALLATION INSTRUCTIONS (P2218D003)

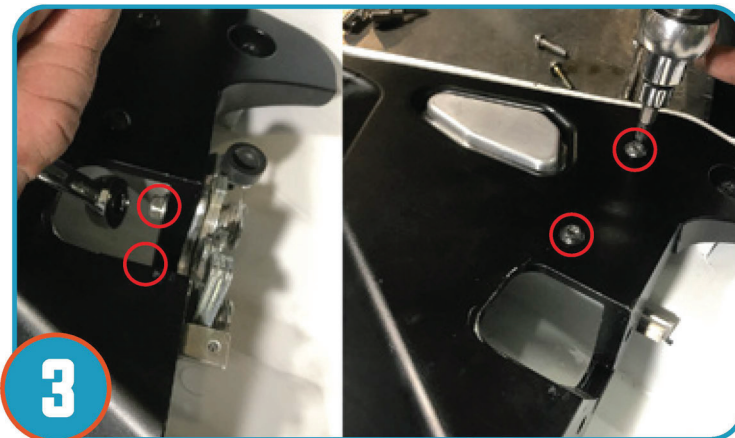
NOTE: Prior to installation, please verify if a revised version of this instruction sheet is available on proarmor.com.



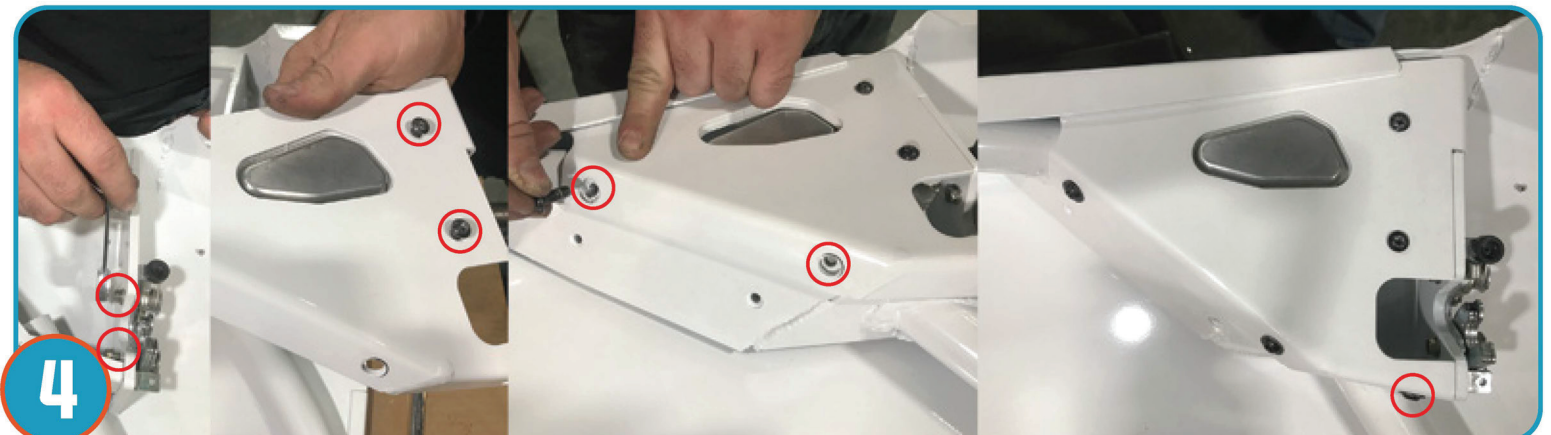
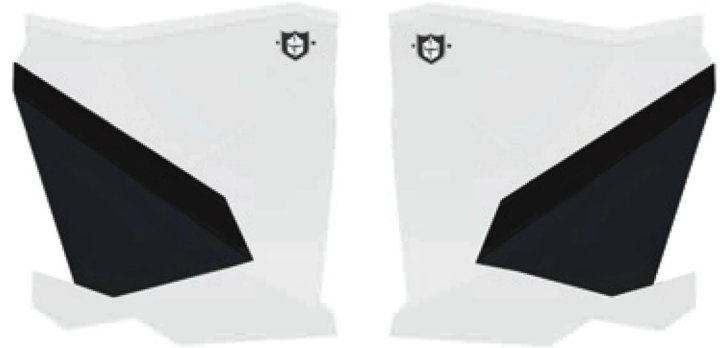
Remove stock rear door by removing 4 bolts per door and remove lower & upper hinge to remove door from vehicle. Repeat for opposite door. *To allow for additional room to access hinge bolts un hinge or remove seats.



Stock hinges will be used for your Pro Armor door. Remove hinge by carefully removing the C-clip & sliding the pin from the hinge. Remove hinge from stock door. Remove bushings from door. Repeat for opposite door.



Remove four bolts holding OEM Paddle latch on the stock rear door. Repeat for opposite door.



Attach the slam latch & paddle latch to latch plate (provided) as shown with the 4 bolts removed from step 3. Only thread half way. Attach latch plate to door using 4 provided bolts. Secure all 8 bolts.



TURBO R 4 INSTALLATION INSTRUCTIONS (P2218D003)



5 A. Insert bushings removed from step 2 for top and bottom hinges of the Pro Armor door. B. With the inside of the door facing up, place stock hinge as shown in picture. Insert pin through lower hinge. Firmly squeeze door hinge to ensure pin is all the way through. C. Install C-clip on pin. D. Repeat for upper hinges. Repeat for opposite rear door.



6 Position door on vehicle lining up hinge bolt holes to door frame hinge. Use provided hardware to hold door in place.



7 Secure door with bolts provided (2) upper, (2) lower. Adjust door pitch as needed and torque to factory specs. Repeat for opposite door.



Rear doors are now installed continue to front door install instructions.



TURBO R 4 INSTALLATION INSTRUCTIONS (P2218D003)

***NOTE: FRONT DOOR INSTALL STEPS



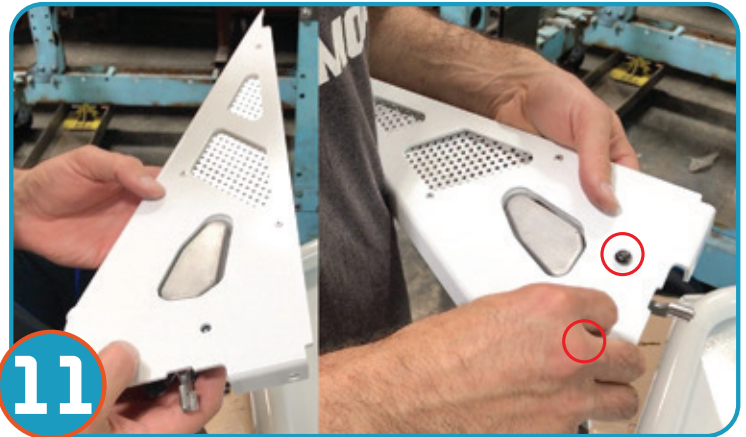
8 Remove stock door by removing 4 bolts per door and remove lower & upper hinge to remove door from vehicle. Repeat for opposite door.



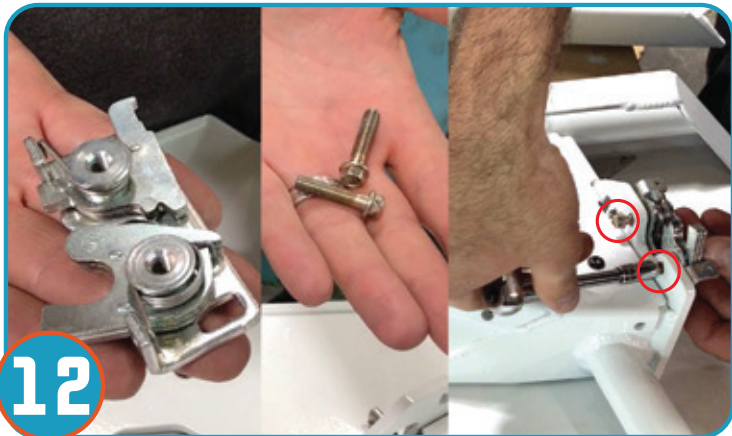
9 Stock hinges will be used for your Pro Armor door. Remove hinge by carefully removing the clip and sliding the pin from the hinge. Remove hinge from stock door. Remove bushings from door. Repeat for opposite door.



10 Remove 4 bolts holding the OEM Paddle latch and slam latch on the stock door. Repeat for opposite side.



11 Attach the paddle latch to the latch plate using 2 bolts removed from step 3. Only Thread half way. Repeat for opposite door.



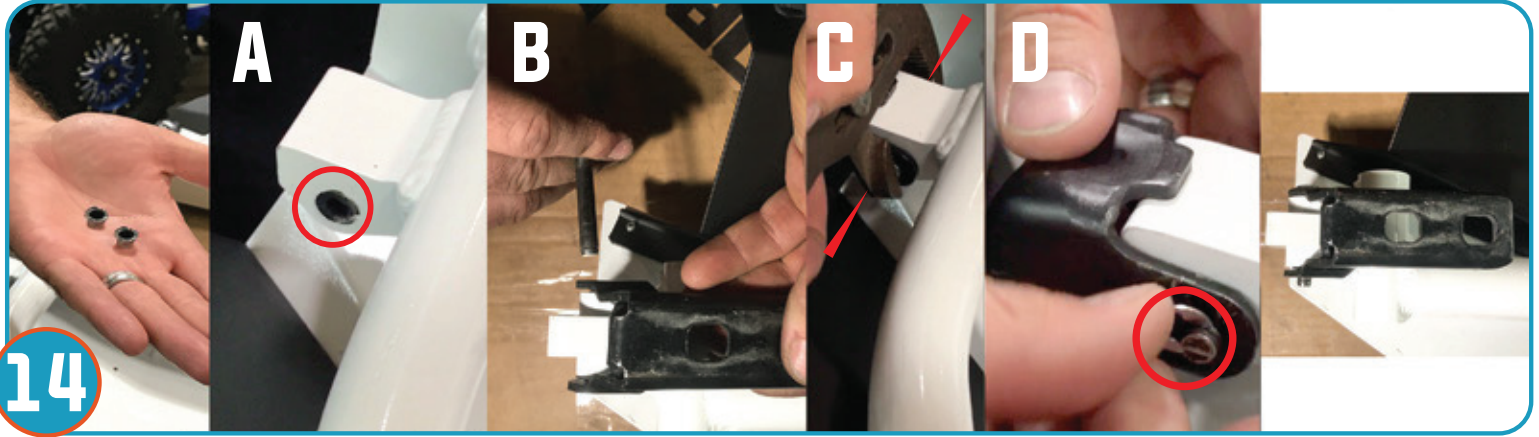
12 Attach the slam latch to the door using 2 bolts removed from step 3. Only Thread half way. Repeat for opposite door.



13 Attach latch plate to door using (4) provided bolts. Secure all 8 bolts from steps 4-6.

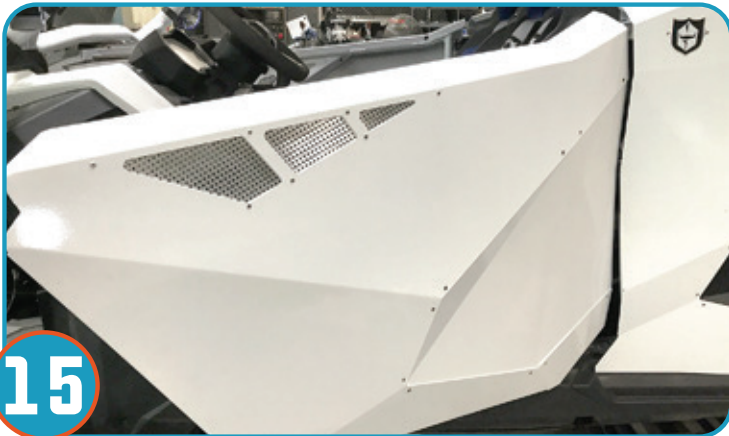


TURBO R 4 INSTALLATION INSTRUCTIONS (P2218D003)



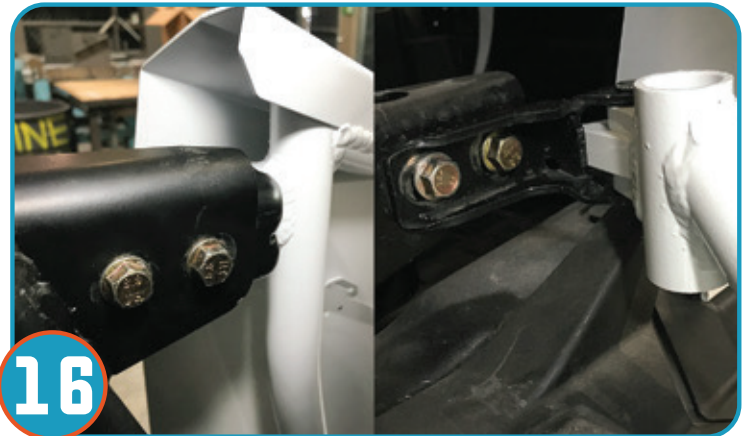
14

A. Insert bushings removed from step 2 top and bottom of the hinge of the Pro Armor door. B. With the inside of the door facing up, place stock hinge as shown in picture. Insert pin through hinge. C. Install clip on pin. D. Firmly squeeze door hinge to ensure pin is all the way through. Repeat for remaining 3 hinges for both doors.



15

Position door on vehicle lining up hinge bolt holes to door frame hinge. Use provided hardware to hold door in place.



16

Secure door with bolts provided (2) upper, (2) lower. Adjust door pitch as needed and torque to factory specs. Repeat for opposite door.



⚠ WARNING

- **Never** stick hands, head or arms outside of vehicle at any time when it is in motion.
- **Always** wear and use proper safety equipment when using any Pro Armor product.
- Improper use of directions and/or product can result in injury to yourself or damage to your vehicle.
- **Disclaimer please read:** This product is sold without warranty expressed or implied. No warranty or representation is made as to the products ability to protect the user / occupant from any injury or death in any manner of use. The user assumes that risk. The effectiveness of this equipment is directly related to the manner in which it is installed, used, and / or maintained.
- **Proper installation is solely the responsibility of the installer, and will not be assumed by Pro Armor.**
- If you have questions about your installation or are unable able to complete installation, contact Pro Armor Customer Service (888)312-7667 or have an authorized dealer or trained technician, inspect your installation.