

# PRO ARMOR

EVERY RIDE HAS A STORY

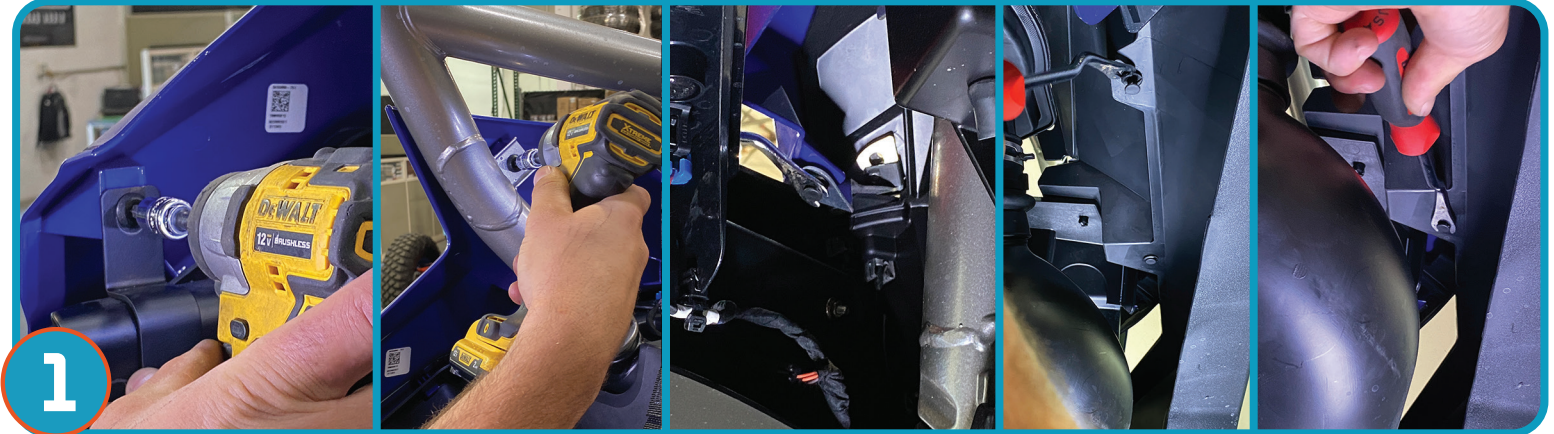


### TOOLS REQUIRED:

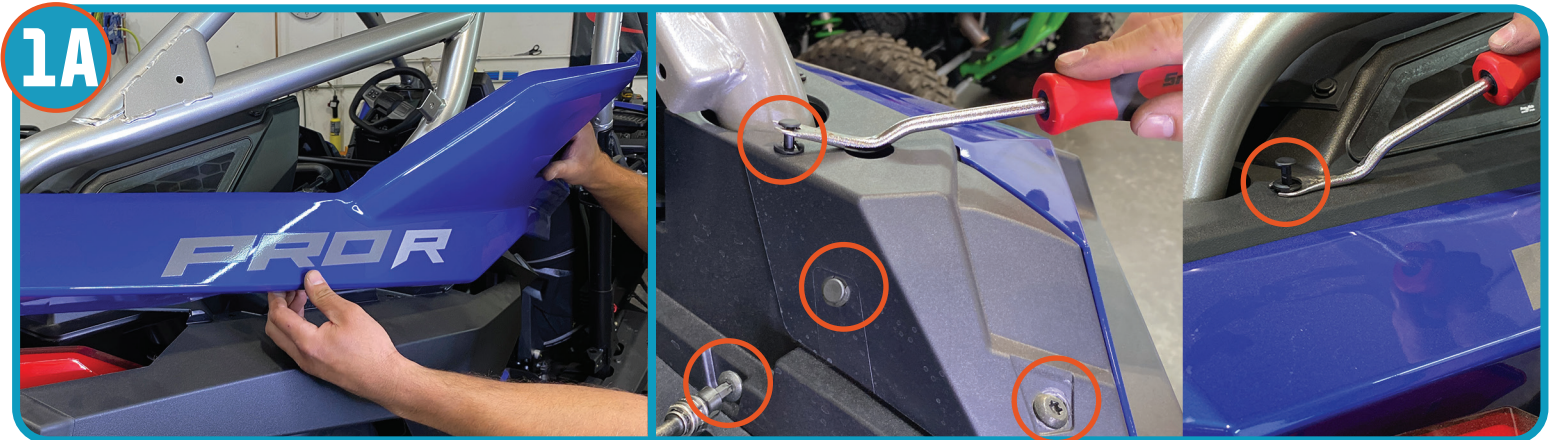
- RATCHET OR IMPACT GUN
- SOCKETS 15MM (B-PILLAR), 16MM (D-PILLAR), 18MM (A-PILLAR) , 21MM (C-PILLAR)
- SOCKET- T40
- WRENCH 18MM (A-PILLAR)
- FLAT HEAD SCREW DRIVER OR 5/16TH SOCKET FOR CVT TUBE CLAMPS
- TORQUE WRENCH
- GANTRY TO LIFT CAGES, VEHICLE LIFT OR FLOOR JACKS
- PUSH PIN REMOVAL TOOL

## PRO R MP CAGE INSTRUCTIONS (P2112C054, P2112C055)

+ REMOVING DOORS AND REAR SEATS WILL ASSIST WITH THE EASE OF INSTALL, BUT NOT NECESSARY. +



**1** Remove rear plastic as shown. There are (2) T40 bolts and (3) push pins that hold the rear fender on. The first T-40 bolt is located at the door hinge bracket and the second is on the cage C-pillar bracket. The 3 push pins are located under the rear wheel well.



**1A** Unhinge clips on plastics and remove from vehicle. Remove 3- push pins & 2-T40 Bolts. Repeat on opposite side of vehicle.

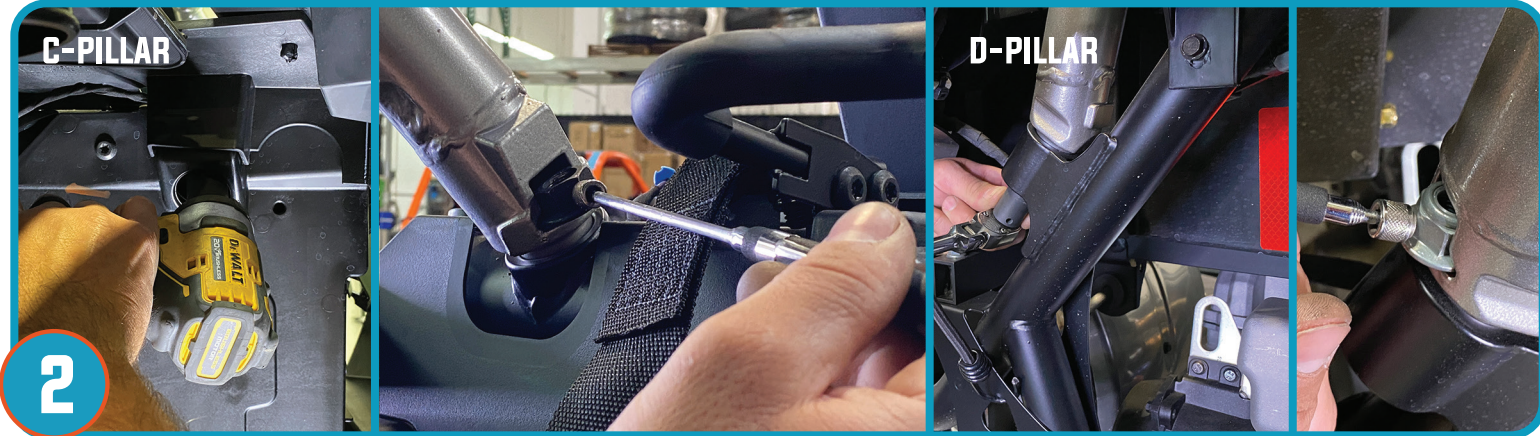


Utilize a bungi-chord as shown allowing for ease of cage removal. Loosen upper and lower clamps and remove CVT duct assembly.



## PRO R MP CAGE INSTRUCTIONS (P2112C054, P2112C055)

+ USE OF A GANTRY & VEHICLE LIFT WILL ASSIST IN THE REMOVAL & INSTALL PROCESS +



Starting at the C-Pillar, remove the Bolt located underneath the rear wheel well as shown and retrieve nut. Repeat for opposite C-Pillar. Moving to the D-pillar remove bolt and retrieve nut and repeat for opposite side.



To access A pillar bolts fold rubber boot up and disconnect the speaker (if applicable), remove bolt and nut. Repeat on other side. Move to B-Pillar and remove bolts, repeating for opposite side.



When removing the stock cage and installing the PA cage it is recommended to lift the vehicle off the ground to allow chassis flex. Safely remove stock cage using a gantry or multiple individuals (a minimum of 4 adults). Remove the A-Pillar boots and place on your new Pro Armor cage.

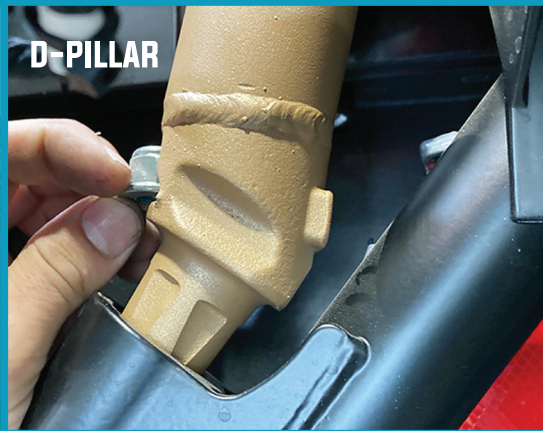


## PRO R MP CAGE INSTRUCTIONS (P2112C054, P2112C055)

**+ FOLLOW THE ROPS SEQUENCE FOR INSTALL OF NEW CAGE (C, D, A, B PILLARS)+**



5



D-PILLAR

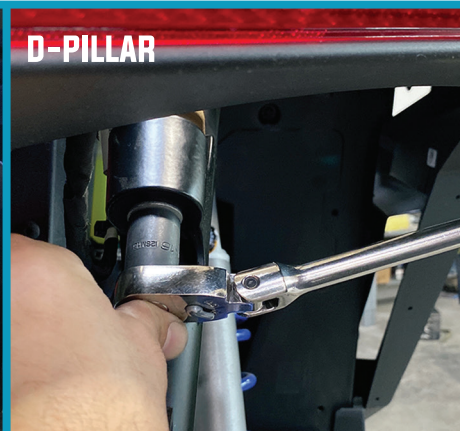


Safely place your Pro Armor cage using a gantry or multiple individuals, lifting onto vehicle. Guide the D-Pillar into mounting positions first, lowering the C, B, A pillars as it is lowered onto vehicle. Insert D-Pillar nut and thread the bolt to hold D-pillar in position. \*hold the A pillar up with either extra bolts, big screw driver or pry bar.

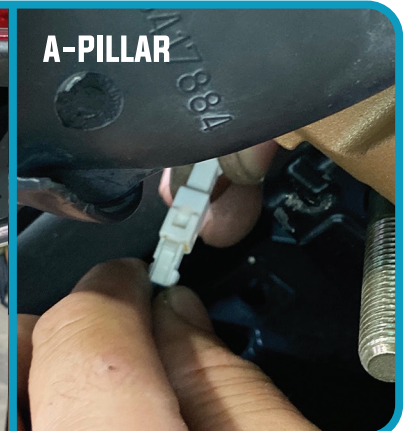


C-PILLAR

6



D-PILLAR



A-PILLAR

Insert C-Pillar nut as shown, tightening bolt (inside wheel well) threading to nut securing C-pillar. Repeat for opposite side of vehicle. Proceed to tighten D-pillar bolts on both sides of vehicle. Re-connect speaker wire at A-Pillar.



7



Insert A-Pillar bolts threading to nut securing A-pillar. Repeat for opposite side of vehicle.



## PRO R MP CAGE INSTRUCTIONS (P2112C054, P2112C055)

+ FOLLOW THE ROPS SEQUENCE FOR INSTALL OF NEW CAGE (C, D, A, B PILLARS)+



8

Insert B-Pillar bolts as shown, tightening bolt, threading to nut securing B-pillar. Repeat for opposite side of vehicle. Proceed to torque all mounting bolts to factory spec in the following order, C,D,A,B and C.



9

Re-apply A-pillar boot so groove of boot fits proper with plastics of vehicle.

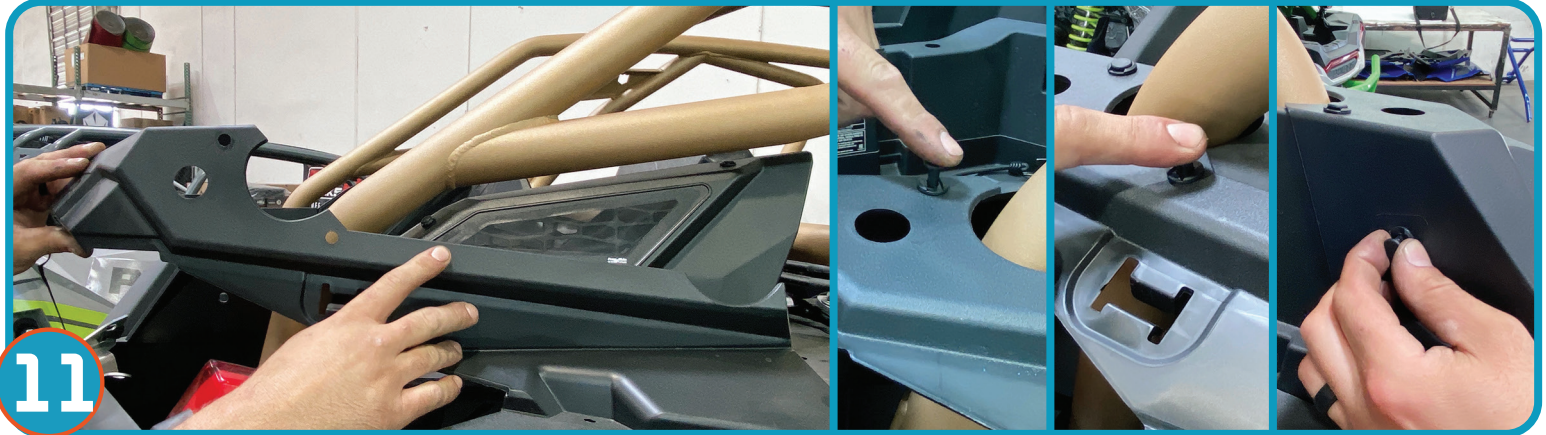


10

Re-connect CVT duct assembly. Position upper and lower tube as shown tightening the gear clamps to seal and secure.



## PRO R MP CAGE INSTRUCTIONS (P2112C054, P2112C055)

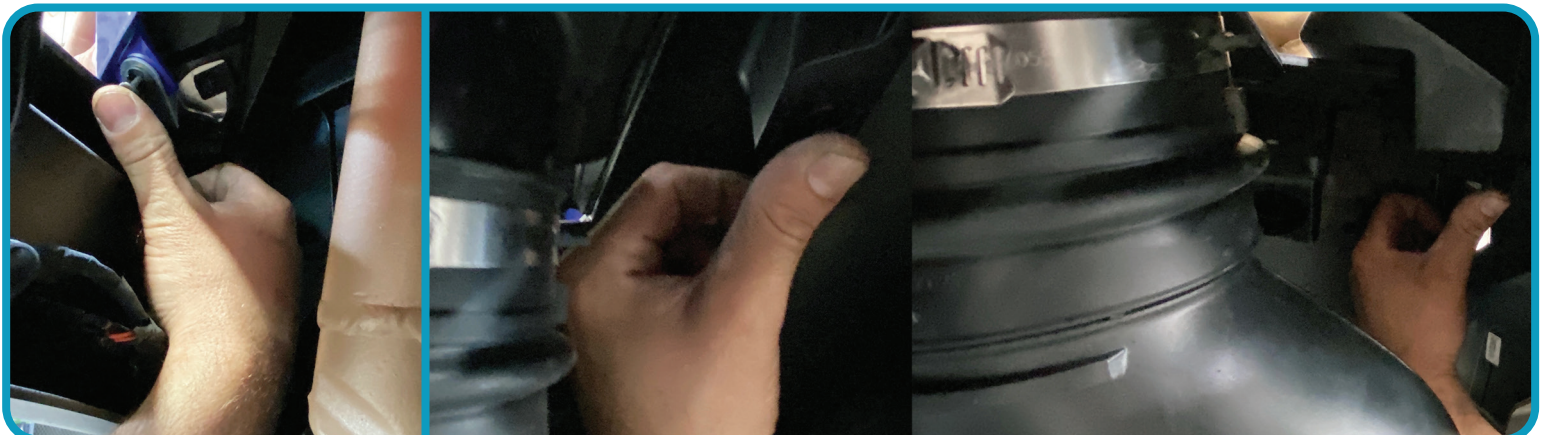


11

Re-apply plastics of vehicle. Insert push pins at locations shown.



Tighten Bolts and reapply plastics paying special attention to clipping in plastics properly to secure.



Re-apply push-pin (1) located at rear, behind brake lights and (2) Inside wheel well near CVT duct assembly.



## PRO R MP CAGE INSTRUCTIONS (P2112C054, P2112C055)



Tighten last two bolts in front and behind inside C-pillar, repeat for opposite side of vehicle.



PRO ARMOR CAGE SYSTEMS HAVE BEEN LABORATORY TESTED TO MEET OR EXCEED FED AN-SI/ROHVA-1 STANDARDS.

### DISCLAIMER:

This product is sold without warranty expressed or implied. No warranty or representation is made as to products ability to protect the user/occupant from any injury or death in any manner of use. The user assumes that risk. The effectiveness of this equipment is directly related to the manner in which it is installed, used and/or maintained. Proper installation is solely the responsibility of the installer, and will not be assumed by Pro Armor.

- **Never** stick hands, head or arms outside of vehicle at any time when it is in motion.
- **Always** wear and use proper safety equipment when using any Pro Armor product.
- Improper use of directions and/or product can result in injury to yourself or damage to your vehicle.
- **Disclaimer please read:** This product is sold without warranty expressed or implied. No warranty or representation is made as to the products ability to protect the user / occupant from any injury or death in any manner of use. The user assumes that risk. The effectiveness of this equipment is directly related to the manner in which it is installed, used, and / or maintained.
- **Proper installation is solely the responsibility of the installer, and will not be assumed by Pro Armor.**
- If you have questions about your installation or are unable able to complete installation, contact Pro Armor Customer Service (888)312-7667 or have an authorized dealer or trained technician, inspect your installation.

**WARNING**