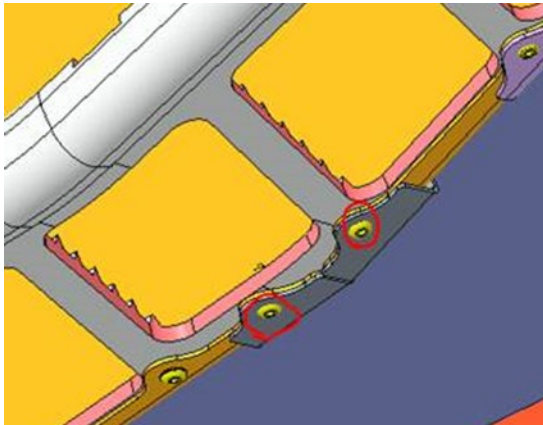




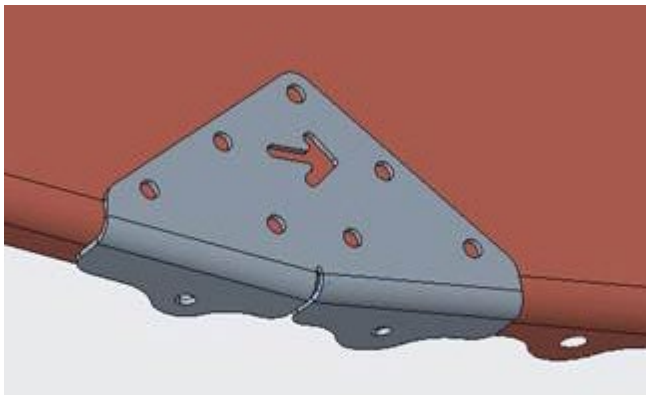
### ***Inner Tunnel brace kit for 2026 Indy Matryx Cross Country 600***

The kit (#0818038) must be purchased from the Polaris Race Dept. (kit includes: 18-#7661637 rivets, 2-inner plates)

- 1.) Drill out the two below rivets and use these two holes to position and locate new bracket



- 2.) From inside the tunnel install seven #7661637 rivets. The plates are directional, arrow towards front of snowmobile.



- 3.) Repeat on opposite side of tunnel