

Fitment Table Overview

Use this document for a better understanding of fitment tables and small details

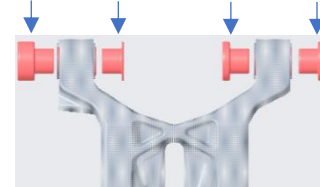
Call the Timbersled Product Pros at any time! **888.588.6326**



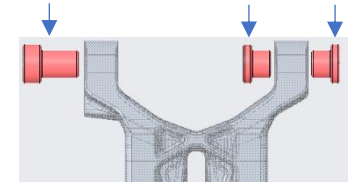
Sub Frame Reducers

- Made of steel, stainless (silver in color) or zinc plated (gold in color)
- Position of reducer is indicated as sitting on the bike (see diagram)
- Each is marked with a 5- or 3-digit code
 - 5-digit is the last 5 of the part number
 - 3-digit code can be cross referenced using the “Legacy conversion chart” located with Fitment Tables
- Some bikes require only 3 sub frame reducers. N/A means no spacer is needed

Sub Frame			
Left		Right	
Outer	Inner	Inner	Outer
5141122	5141124	5141123	5141160



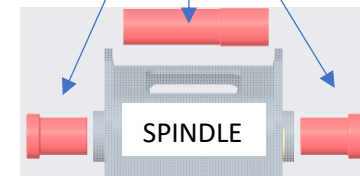
Sub Frame			
Left		Right	
Outer	Inner	Inner	Outer
5141137	N/A	5141145	5141145



Spindle Reducers

- Made of aluminum
- Position of reducer is indicated as sitting on the bike (see diagram)
- Each is marked with a 5-digit code or with colored paint
 - Color can be cross referenced using the “Legacy conversion chart”
- Some bikes, not all, require a new axle shaft as called out in the middle column

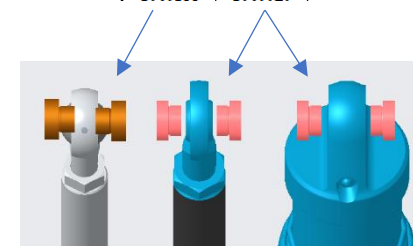
Spindle		
Left RDCR	Center Spacer or Axle or spacer	Right RDCR
5141187	5141214	5141194



Strut Rod Reducers

- Made of aluminum
- Each reducer is used 2X, one on each side (they are the same LH and RH)
- Silver fixed struts use different upper strut reducers than the TSS
- Newer ARO/RIOT black fixed struts use the same upper reducers as the TSS
- ARO/RIOT do not require a lower strut rod reducers
- Mountain horse lower strut reducers are all the same, one on each side. Part number 5141176

Strut Reducer	
Fixed Strut	TSS / Black Fixed Strut
5141539	5141171



Fitment Table Overview

Use this document for a better understanding of fitment tables and small details

Call the Timbersled Product Pros at any time! **888.588.6326**



TSS and Fixed Strut Lengths

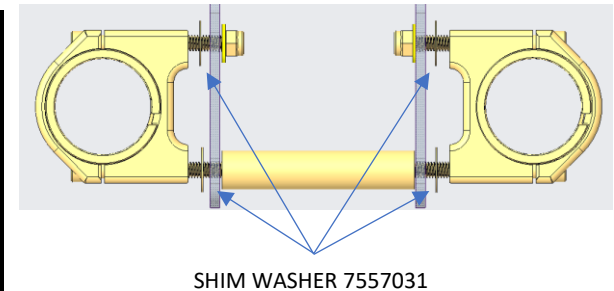
- All Timbersled install kits come from the factory at the properly set length per the application
- For more length adjustment and service parts detail see the “STRUT ROD DETAILS” sheet
- This information is nice to have and needed if making your own swap to a different bike
- Strut lengths are measured center to center of the eyelets/ball joints.

Strut Length		Strut Length		
Mountain Horse		ARO / RIOT		
Fixed	TSS	Fixed	TSS	TSS QSL
Inches	Inches	Inches	Inches	Inches
12 5/8	12 11/16	12 1/8	12 7/16	12 5/16

Fork Clamps

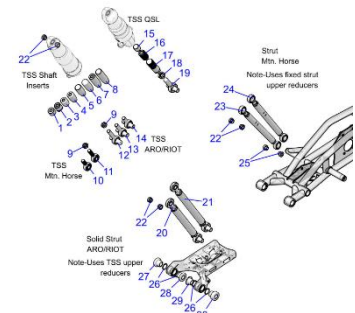
- Fork clamps are bike specific
- If the forks on the bike are not stock, use the table here to find the correct diameter and shim as needed
- Some fork clamp packs come with 4 shim washers; these are needed on specific Honda models. Use as needed to ensure proper fork alignment and a tight fit of the inner clamp to the spindle as shown
- Inner and outer fork clamps are only serviced in packs and come with everything shown in the graphic on the right, including bushings

Fork Clamp Details		
Fork Clamp Pack PN	Fork Dia. MM	Notes
2882619	43	
2882615	46	
2889431		Updated Fitment
*2882617	48	
*2882616		
2882618	49	



Service Parts

- The latest parts catalog for the Timbersled track kits have a section dedicated to Install Kits. Reference this section for common serviceable parts.
- The Install Kit’s service page is not year specific, so search any ARO or RIOT in the latest year shown on www.Timbersled.com service and maintenance section
- Fork clamps are only serviced in the Fork Clamp Packs (These include the inner and outer clamps, bushings and all hardware needed)
- Individual spacers and reducers are serviceable, part numbers are found on the fitment table and not in the parts catalog



Fitment Table Overview

Use this document for a better understanding of fitment tables and small details

Call the Timbersled Product Pros at any time! **888.588.6326**



Other details

- Bike Counter Shaft Sprocket sizes**
 - Mountain Horse kits: The sprocket size of the bike might need to be changed to ensure proper engine chain tension
 - Generally, 13T sprocket is stock and a good starting point, some 05-16 KTM bikes need a 12T sprocket.
 - If the engine chain is too short, go down a size on the bike sprocket
 - If the engine chain is too long after proper chain adjustment, install the oversized chain slider (PN 5454242) or go up on sprocket size
 - ARO / RIOT kits: Sprocket size is not as critical for fitment as it has ample chain adjustment
 - Sprocket size will change the gearing of the kit and is recommended to adjust per your riding style or preference. 13T is a recommended starting point
 - Sherco fitment is unique on ARO / RIOT kits, see instructions (PN 9940447) that come with that kit for more details
- Sprocket spacers**
 - Some bikes (Kawasaki and Honda) need the bike sprocket spaced out away from the engine case for proper alignment or chain clearance. Depending on the bike, this configurations uses one or two spacers.
 - The larger spacer goes on the inside of the sprocket against the engine case, if needed a smaller spacer is provided and goes under the sprocket bolt.
 - This is noted in the “Specialty” column on the fitment table.
- Speedo spacer**
 - Some bikes that have a mechanical speedometer will have an additional spindle spacer to take up the extra space made when removing the speedometer mechanism, this is indicated in the “Specialty” column.
- Superceded/Discontinued Part numbers (*astrix)**
 - Older legacy install kit parts that are not marked with 5 digits can be cross references using the “Legacy Conversion Sheet”
 - In some instances, fitment has been improved with a new part numbers. In this case, legacy part numbers are marked with an asterisk (*). Either Install Kit part number (new or legacy) will still work on the bike, they just need to match as a set. This only applies when kits have been updated.

Specialty
Other items and Install notes
5141213, 7557084 Sprkt
5141213, 7557084 Sprkt
5141215 - Speedo

Bike			Install Kit		Install Kit		Sub Frame				
Year	Size	Model	Mountain Horse		ARO / RIOT			Left		Right	
			Fixed	TSS	Fixed	TSS	TSS QSL	Outer	Inner	Inner	Outer
			Complete IKIT		Complete IKIT						
2021	250 - 501	FC / FE / FX			2884894		2884795	5141137	N/A	5141145	5141145
			*2882676	*2882677	*2883370	*2883371		*5141164	*5141177	*5141162	*5141130

Updated Fitment

Older Fitment