

GAS GAS / BETA FAN KIT INSTALLS

STEP 1

Make sure the gas is shut off on the bike. Remove seat, gas tank and radiator shrouds. Drain the coolant out of the bike by removing the drain plug on the water pump located on the right side of the engine. The drain plug is the bolt on the water pump that has the copper washer. **Do not lose or damage the copper washer.** Remove the right radiator from bike.

STEP 2

Install the power harness, with built in fuse, directly to the battery. (**Red to Positive and Black to Negative**). Run harness along frame to the front of the bike. Make sure to route wires where they will not be pinched or rubbed.

STEP 3

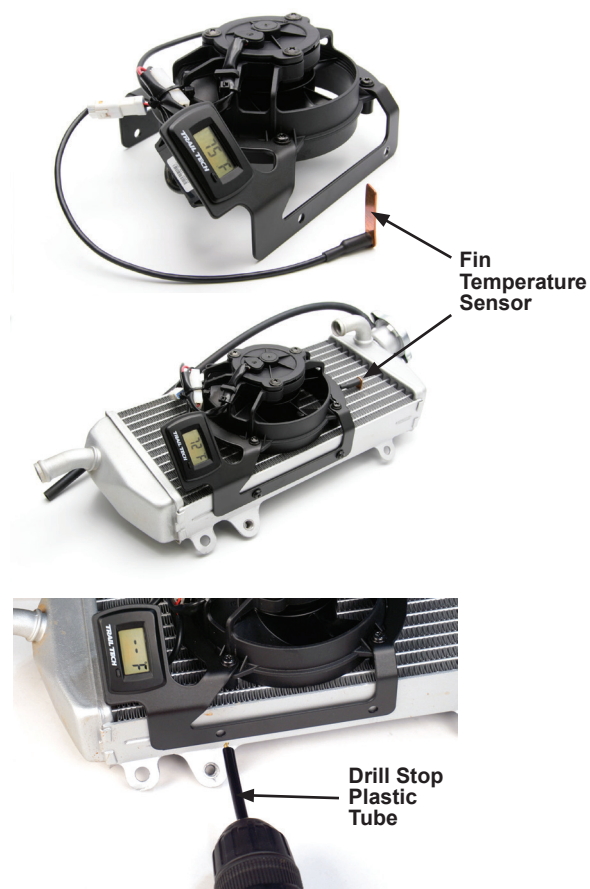
Place fan kit on radiator in position shown in picture. Line up the TTO temperature sensor with the bottom of the radiator tank as shown. Push the fan kit down so it stops on the radiator face and mark the four side mounting holes.

STEP 4

Use an 11/64" drill (not included) **WITH A DRILL STOP** set to just penetrate the outside of the radiator wall but not into the water coolant tubes.

STEP 5

Align fan bracket on the radiator to the mounting tabs on the radiator. Use included screws to mount the bracket to the radiator. Use a T20 Torx driver. Recommended torque is 20 in-lbs (2.5 N-m).



STEP 6

Once bracket and fan are mounted to the radiator install the Radiator Fin Temperature Sensor. **TIP: To Compensate for the influence of ambient air passing across the sensor, apply thermal grease (included in kit) into the gap between the fins of the radiator where the sensor will be installed. It is important to place the grease only in the gap. Grease on the surface of the radiator will attract dirt and reduce function.**

STEP 7

Install radiator back onto the bike and then plug the power lead from the Fan into the power wire harness that was installed in Step 1. Then install the Radiator Fin Temp Sensor into the radiator fins using the provided thermal paste. Refill radiator with coolant.

STEP 8

Make sure all wiring is tied out of the way to keep from being pinched or rubbed when seat, tank, and shrouds are installed back on the bike. Reinstall the seat, gas tank, and radiator shrouds back on the bike. Lastly follow the included TTV Temperature Manual to set the TTV meter to the designed activation temperature.



CHANGING TEMPERATURE UNITS AND FAN SETTING INSTALLS

1. ENTER SETUP MODE

To enter set up mode, press and hold button for 3 seconds.
Release when all LCD segments flash on.

2. SET TEMPERATURE FORMAT

Select Fahrenheit °F or Celsius °C by pressing button when in setup mode. Wait 5 seconds to move to the next setting.

3. SET TEMPERATURE THRESHOLD

"Hi" will display after setting the temperature format in setup mode. Press and hold the button to increment or decrement. The arrow in the bottom left corner indicates direction of adjustment. The direction of adjustment will change automatically in 3 seconds if button is not pressed. After 3 more seconds the meter will automatically exit setup mode and resume current temperature display.



Disclaimer: Trail Tech's Fan Kit does not guarantee your vehicle will not overheat. If steam is present or engine temperature is high, please stop and wait for engine to cool. Overheating may cause engine damage.

